

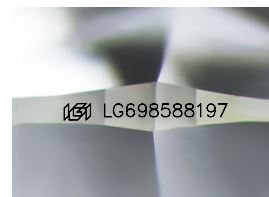
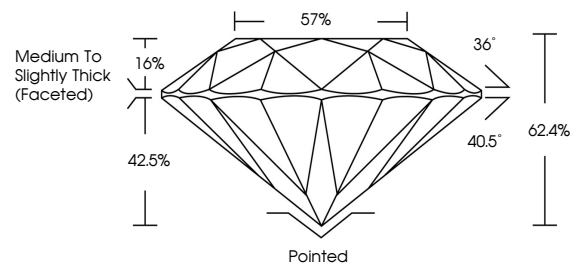


ELECTRONIC COPY

LABORATORY GROWN DIAMOND REPORT

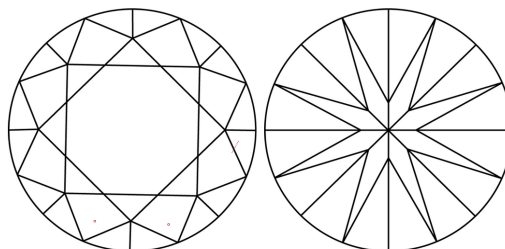
LG698588197
Report verification at igi.org

PROPORTIONS



Sample Image Used

CLARITY CHARACTERISTICS



KEY TO SYMBOLS

Red symbols indicate internal characteristics.
Green symbols indicate external characteristics.

COLOR

D E F G H I J Faint Very Light Light

CLARITY

IF WS¹⁻² VS¹⁻² SI¹⁻² |¹⁻³

| | | | | |
|------------------------|--------------------------------|---------------------------|----------------------|----------|
| Internally Flawless | Very Very Slightly Included | Very Slightly Included | Slightly Included | Included |
|------------------------|--------------------------------|---------------------------|----------------------|----------|



April 26, 2025

IGI Report Number **LG698588197**Description **LABORATORY GROWN DIAMOND**Shape and Cutting Style **ROUND BRILLIANT**

Measurements 10.70 - 10.78 X 6.70 MM

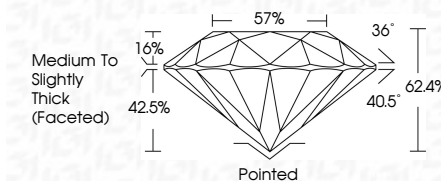
GRADING RESULTS

Carat Weight **4.81 CARATS**

Color Grade

Clarity Grade WS 2

Cut Grade **IDEAL**



ADDITIONAL GRADING INFORMATION

Polish **EXCELLENT**Symmetry **EXCELLENT**Fluorescence **NONE**Inscription(s)  LG698588197

Comments: This Laboratory Grown Diamond was created by Chemical Vapor Deposition (CVD) growth process.
Type IIa



© IGI 2020, International Gemological Institute

FD - 10 20

www.igi.org

THIS DOCUMENT WAS PRODUCED WITH THE FOLLOWING SECURITY MEASURES: SPECIAL DOCUMENT PAPER, INK SCREENS, WATERMARK BACKGROUND DESIGNS, HOLOGRAM AND OTHER SECURITY FEATURES NOT LISTED AND DO EXCEED DOCUMENT SECURITY INDUSTRY GUIDELINES

| | | |
|-------------------------|---|--|
| April 26, 2026 | IGI Report No. LG59658197 | |
| ROUND BRILLIANT | | |
| 10.70 - 10.78 X 6.70 MM | 4.81 CARATS | |
| Color Weight | F 2 | |
| Color Grade | VVS 2 | |
| Clarity Grade | IDEAL | |
| Cut Grade | 62.4% | |
| Depth | 57% | |
| Table | Medium to Slightly Thick (faceted) | |
| Girdle | | |
| Culet | Pointed | |
| Polish | EXCELLENT | |
| Symmetry | EXCELLENT | |
| Fluorescence | NONE | |
| Inscriptions(s) | #69 LG59658197 | |
| Comments: | | |
| | This Laboratory Growth Diamond was created by Chemical Vapor Deposition (CVD) growth process. | |
| Type IIA | | |