



**INTERNATIONAL
GEMOLOGICAL
INSTITUTE**

ELECTRONIC COPY

LG699505524
Report verification at igi.org

LABORATORY GROWN DIAMOND REPORT



April 29, 2025

IGI Report Number **LG699505524**

Description	LABORATORY GROWN DIAMOND
-------------	--------------------------

Shape and Cutting Style **ROUND BRILLIANT**

Measurements	9.56 - 9.58 X 5.78 MM
--------------	-----------------------

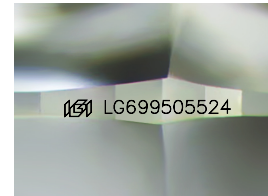
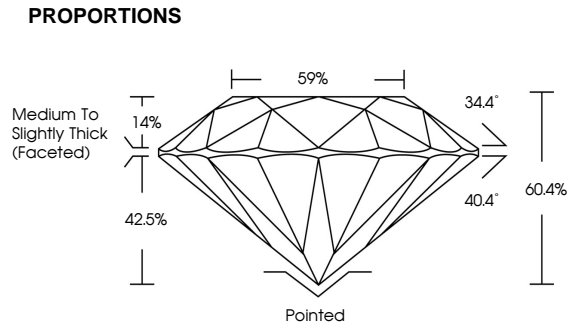
GRADING RESULTS

Carat Weight **3.29 CARATS**

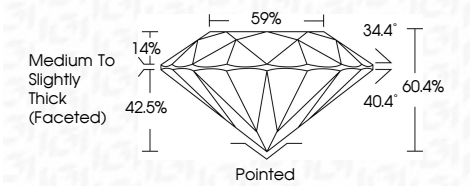
Color Grade	E
-------------	---

Clarity Grade VS 1

Cut Grade **IDEAL**



Sample Image Used



COLOR

D E F G H I J Faint Very Light Light

CLARITY

IF WS¹⁻² VS¹⁻² SI¹⁻² I¹⁻

Internally Flawless	Very Very Slightly Included	Very Slightly Included	Slightly Included	Included
------------------------	--------------------------------	---------------------------	----------------------	----------



© IGI 2020, International Gemological Institute

FD - 10 20

www.igi.org



THIS DOCUMENT WAS PRODUCED WITH THE FOLLOWING SECURITY MEASURES: SPECIAL DOCUMENT PAPER, INK SCREENS, WATERMARK BACKGROUND DESIGNS, HOLOGRAM AND OTHER SECURITY FEATURES NOT LISTED AND DO EXCEED DOCUMENT SECURITY INDUSTRY GUIDELINES.



IGI

April 29, 2025
IGI Report No LG699505524

IGI Report No LG69950
ROUND BRILLIANT

9.56 - 9.58 X 5.78 MM
Carat Weight **3.29 CARATS**

Color Grade	E
Color Grade	100

Clarity Grade		VS1
Cut Grade		IDEAL
Depth		60.4%

Table	59%
Circle	Medium To Slightly

	Thick (Faceted)	Pointed
Culet		

Polish	EXCELLENT
Symmetry	EXCELLENT

Fluorescence	NONE
Inscription(s)	1991 LG699505524

Comments:
This Laboratory Grown Diamond was
received by: Chemical Vapor Deposition

created by Chemical Vapor Deposition (CVD) growth process.
Type IIa