



ELECTRONIC COPY

LABORATORY GROWN DIAMOND REPORT

LG699505644
Report verification at igi.org

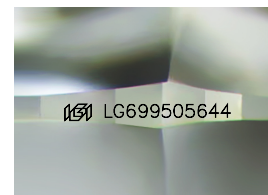
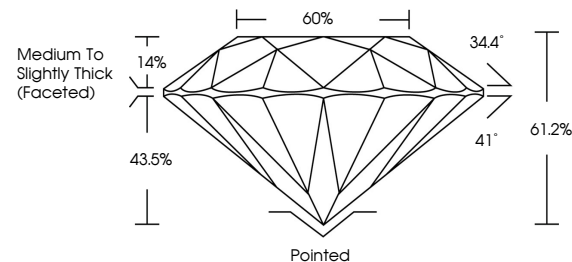
| | |
|-------------------------|--------------------------|
| April 18, 2025 | |
| IGI Report Number | LG699505644 |
| Description | LABORATORY GROWN DIAMOND |
| Shape and Cutting Style | ROUND BRILLIANT |
| Measurements | 7.38 - 7.42 X 4.53 MM |
| GRADING RESULTS | |
| Carat Weight | 1.53 CARAT |
| Color Grade | E |
| Clarity Grade | VS 2 |
| Cut Grade | IDEAL |

ADDITIONAL GRADING INFORMATION

| | |
|----------------|----------------|
| Polish | EXCELLENT |
| Symmetry | EXCELLENT |
| Fluorescence | NONE |
| Inscription(s) | 15 LG699505644 |

Comments: This Laboratory Grown Diamond was created by Chemical Vapor Deposition (CVD) growth process.
Type IIa

PROPORTIONS



Sample Image Used

COLOR

D E F G H I J Faint Very Light Light

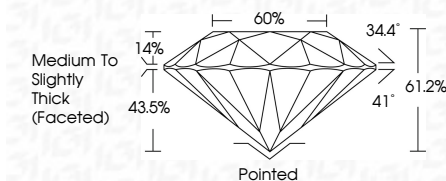
CLARITY

| IF | VS ¹⁻² | VS ¹⁻² | SI ¹⁻² | I ¹⁻³ |
|---------------------|-----------------------------|------------------------|-------------------|------------------|
| Internally Flawless | Very Very Slightly Included | Very Slightly Included | Slightly Included | Included |

LABORATORY GROWN DIAMOND REPORT



| | |
|-------------------------|--------------------------|
| April 18, 2025 | |
| IGI Report Number | LG699505644 |
| Description | LABORATORY GROWN DIAMOND |
| Shape and Cutting Style | ROUND BRILLIANT |
| Measurements | 7.38 - 7.42 X 4.53 MM |
| GRADING RESULTS | |
| Carat Weight | 1.53 CARAT |
| Color Grade | E |
| Clarity Grade | VS 2 |
| Cut Grade | IDEAL |



ADDITIONAL GRADING INFORMATION

| | |
|-------------------------------------------------------------------------------------------------------------------------------|-------------------------------------------------------------------------------------------------|
| Polish | EXCELLENT |
| Symmetry | EXCELLENT |
| Fluorescence | NONE |
| Inscription(s) |  LG699505644 |
| <p>Comments: This Laboratory Grown Diamond was created by Chemical Vapor Deposition (CVD) growth process.</p> <p>Type IIa</p> | |



© IGI 2020, International Gemological Institute

FD - 10 20

www.igi.org



THIS DOCUMENT WAS PRODUCED WITH THE FOLLOWING SECURITY MEASURES: SPECIAL DOCUMENT PAPER, INK SCREENS, WATERMARK, BACKGROUND DESIGNS, HOLOGRAM AND OTHER SECURITY FEATURES NOT LISTED AND DO EXCEED DOCUMENT SECURITY INDUSTRY GUIDELINE

April 18, 2025
GI Report No LG699505644
ROUND BRILLIANT

7.38 - 7.42 X 4.53 MM

1.38 - 7.42 X 4.53 MM

| Catal Weight II | 1.35 Catal |
|-----------------|------------|
| Color Grade | E |

| Clarity Grade | VS 2 |
|---------------|------|
| VS 2 | |

| Cut Grade | VS 2 | IDEAL |
|-------------|------|-------|
| Flawless | 100% | 100% |
| Very Good | 99% | 100% |
| Good | 97% | 100% |
| Fair | 95% | 100% |
| Very Poor | 93% | 100% |
| Poor | 91% | 100% |
| Fairly Poor | 89% | 100% |
| Poor | 87% | 100% |
| Fairly Poor | 85% | 100% |
| Poor | 83% | 100% |
| Fairly Poor | 81% | 100% |
| Poor | 79% | 100% |
| Fairly Poor | 77% | 100% |
| Poor | 75% | 100% |
| Fairly Poor | 73% | 100% |
| Poor | 71% | 100% |
| Fairly Poor | 69% | 100% |
| Poor | 67% | 100% |
| Fairly Poor | 65% | 100% |
| Poor | 63% | 100% |
| Fairly Poor | 61% | 100% |
| Poor | 59% | 100% |
| Fairly Poor | 57% | 100% |
| Poor | 55% | 100% |
| Fairly Poor | 53% | 100% |
| Poor | 51% | 100% |
| Fairly Poor | 49% | 100% |
| Poor | 47% | 100% |
| Fairly Poor | 45% | 100% |
| Poor | 43% | 100% |
| Fairly Poor | 41% | 100% |
| Poor | 39% | 100% |
| Fairly Poor | 37% | 100% |
| Poor | 35% | 100% |
| Fairly Poor | 33% | 100% |
| Poor | 31% | 100% |
| Fairly Poor | 29% | 100% |
| Poor | 27% | 100% |
| Fairly Poor | 25% | 100% |
| Poor | 23% | 100% |
| Fairly Poor | 21% | 100% |
| Poor | 19% | 100% |
| Fairly Poor | 17% | 100% |
| Poor | 15% | 100% |
| Fairly Poor | 13% | 100% |
| Poor | 11% | 100% |
| Fairly Poor | 9% | 100% |
| Poor | 7% | 100% |
| Fairly Poor | 5% | 100% |
| Poor | 3% | 100% |
| Fairly Poor | 1% | 100% |

| | |
|-------|-------|
| Depth | 61.2% |
|-------|-------|

| | 60% |
|--------|-----|
| Table | |
| Girdle | |

Girdle

| | Pointed | Culet |
|--------------|---------|-------|
| 11 mm x 4 mm | | |

| | |
|--------|-----------|
| Cut | Pointed |
| Polish | EXCELLENT |

Symmetry

| | |
|----------------|------------------|
| Fluorescence | NONE |
| Inscription(s) | 1811 G-609575644 |

| Inscription(s) | Accession Number |
|----------------|-------------------|
| | 1981 LG-699505644 |

Comments:
This Laboratory Grown Diamond was

**This Laboratory Grown Diamond was
Created by Chemical Vapor Deposition**

Created by Chemical Vapor Deposition (CVD) growth process, Type IIa

Type IIa