



ELECTRONIC COPY

LABORATORY GROWN DIAMOND REPORT

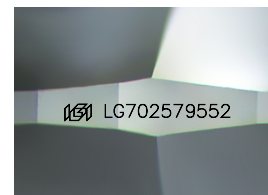
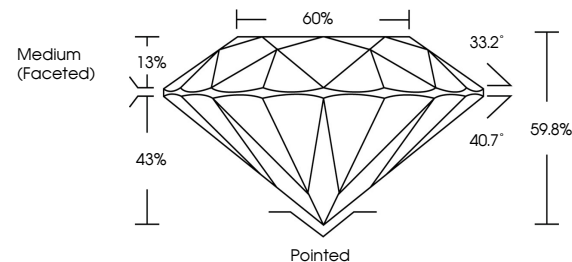
LG702579552
Report verification at igi.org

April 30, 2025	
IGI Report Number	LG702579552
Description	LABORATORY GROWN DIAMOND
Shape and Cutting Style	ROUND BRILLIANT
Measurements	8.96 - 9.01 X 5.37 MM
GRADING RESULTS	
Carat Weight	2.66 CARATS
Color Grade	F
Clarity Grade	VS 1
Cut Grade	IDEAL

ADDITIONAL GRADING INFORMATION

Polish	EXCELLENT
Symmetry	EXCELLENT
Fluorescence	NONE
Inscription(s)	 LG702579552
Comments: This Laboratory Grown Diamond was created by Chemical Vapor Deposition (CVD) growth process.	
Type IIa	

PROPORTIONS



Sample Image Used

COLOR

D E F G H I J Faint Very Light Light

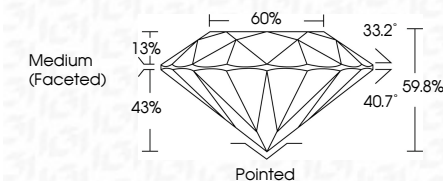
CLARITY

IF	VS ¹⁻²	VS ¹⁻²	SI ¹⁻²	I ¹⁻³
Internally Flawless	Very Very Slightly Included	Very Slightly Included	Slightly Included	Included

LABORATORY GROWN DIAMOND REPORT



April 30, 2025	
IGI Report Number	LG702579552
Description	LABORATORY GROWN DIAMOND
Shape and Cutting Style	ROUND BRILLIANT
Measurements	8.96 - 9.01 X 5.37 MM
GRADING RESULTS	
Carat Weight	2.66 CARATS
Color Grade	F
Clarity Grade	VS 1
Cut Grade	IDEAL



ADDITIONAL GRADING INFORMATION

Polish	EXCELLENT
Symmetry	EXCELLENT
Fluorescence	NONE
Inscription(s)	 LG702579552
<p>Comments: This Laboratory Grown Diamond was created by Chemical Vapor Deposition (CVD) growth process.</p> <p>Type IIa</p>	



© IGI 2020, International Gemological Institute

FD - 10 20



THIS DOCUMENT WAS PRODUCED WITH THE FOLLOWING SECURITY MEASURES: SPECIAL DOCUMENT PAPER, INK SCREENS, WATERMARK, BACKGROUND DESIGNS, HOLOGRAM, AND OTHER SECURITY FEATURES NOT LISTED AND DO EXCEED DOCUMENT SECURITY INDUSTRY GUIDELINES.

www.igi.org

April 30, 2025
GJ Report No. 1G702579552

...ING REPORT NO LG70
...IND BRILLIANT

3.96 - 9.01 X 5.37 MM
2.66 CARATS

Carat Weight	2.66 CARATS
Color Grade	F

Clarity Grade	VS 1	IDEAL
Out Grade		

	59.8%	60%
Depth		
Table		
Circles		

Girdle	Medium (Faceted)

Cullet	Pointed
Polish	EXCELLENT

Symmetry	EXCELLENT
Fluorescence	NONE
Concentration (%)	4.9113700570552

Inscription(s)	Comments:
	<p>191 LG702579552</p>

This Laboratory Grown Diamond was created by Chemical Vapor Deposition (CVD) growth process.

Type IIa