



**ELECTRONIC COPY**

## LABORATORY GROWN DIAMOND REPORT

LG704510701  
Report verification at [igi.org](https://igi.org)

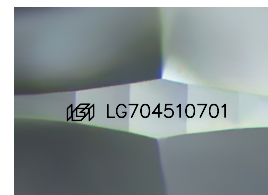
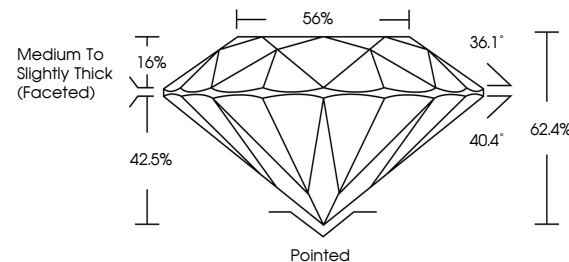
|                         |                          |
|-------------------------|--------------------------|
| May 1, 2025             |                          |
| IGI Report Number       | LG704510701              |
| Description             | LABORATORY GROWN DIAMOND |
| Shape and Cutting Style | ROUND BRILLIANT          |
| Measurements            | 11.22 - 11.25 X 7.01 MM  |
| GRADING RESULTS         |                          |
| Carat Weight            | 5.51 CARATS              |
| Color Grade             | E                        |
| Clarity Grade           | VS 2                     |
| Cut Grade               | IDEAL                    |

### ADDITIONAL GRADING INFORMATION

|                |                 |
|----------------|-----------------|
| Polish         | EXCELLENT       |
| Symmetry       | EXCELLENT       |
| Fluorescence   | NONE            |
| Inscription(s) | 151 LG704510701 |

Comments: This Laboratory Grown Diamond was created by Chemical Vapor Deposition (CVD) growth process.  
Type IIa

## PROPORTIONS



Sample Image Used

## COLOR

D E F G H I J Faint Very Light Light

## CLARITY

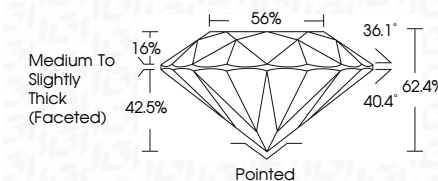
IF                      WS<sup>1-2</sup>                      VS<sup>1-2</sup>                      SI<sup>1-2</sup>                      |<sup>1-3</sup>

| Internally<br>Flawless | Very Very<br>Slightly Included | Very<br>Slightly Included | Slightly<br>Included | Included |
|------------------------|--------------------------------|---------------------------|----------------------|----------|
|------------------------|--------------------------------|---------------------------|----------------------|----------|

## LABORATORY GROWN DIAMOND REPORT



|                         |                          |
|-------------------------|--------------------------|
| May 1, 2025             |                          |
| IGI Report Number       | LG704510701              |
| Description             | LABORATORY GROWN DIAMOND |
| Shape and Cutting Style | ROUND BRILLIANT          |
| Measurements            | 11.22 - 11.25 X 7.01 MM  |
| GRADING RESULTS         |                          |
| Carat Weight            | 5.51 CARATS              |
| Color Grade             | E                        |
| Clarity Grade           | VS 2                     |
| Cut Grade               | IDEAL                    |



### ADDITIONAL GRADING INFORMATION

|   |                           |
|---|---------------------------|
| Polish  | EXCELLENT                 |
| Symmetry  | EXCELLENT                 |
| Fluorescence  | NONE                      |
| Inscription(s)  | <del>LG</del> LG704510701 |
| <p>Comments: This Laboratory Grown Diamond was created by Chemical Vapor Deposition (CVD) growth process.</p> <p>Type IIa</p> |                           |



© IGI 2020, International Gemological Institute

FD - 10 20



THIS DOCUMENT WAS PRODUCED WITH THE FOLLOWING SECURITY MEASURES: SPECIAL DOCUMENT PAPER, INK SCREENS, WATERMARK, BACKGROUND DESIGNS, HOLOGRAM AND OTHER SECURITY FEATURES NOT LISTED AND DO EXCEED DOCUMENT SECURITY INDUSTRY GUIDELINES

**www.igi.org**

