



**ELECTRONIC COPY**

## LABORATORY GROWN DIAMOND REPORT

May 8, 2025	
IGI Report Number	LG705530552
Description	LABORATORY GROWN DIAMOND
Shape and Cutting Style	ROUND BRILLIANT
Measurements	7.32 - 7.37 X 4.62 MM

## GRADING RESULTS

Carat Weight	1.56 CARAT
Color Grade	E
Clarity Grade	VS 2
Cut Grade	EXCELLENT

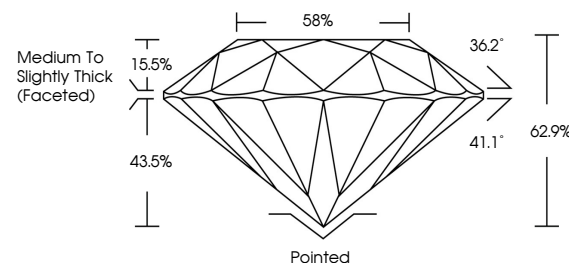
### ADDITIONAL GRADING INFORMATION

Polish	EXCELLENT
Symmetry	EXCELLENT
Fluorescence	NONE
Inscription(s)	15 LG705530552

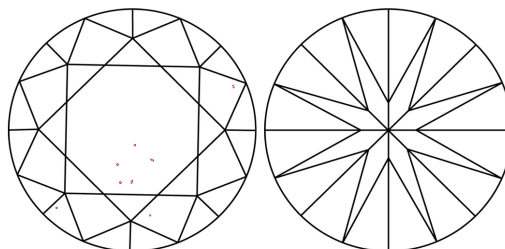
Comments: This Laboratory Grown Diamond was created by Chemical Vapor Deposition (CVD) growth process.  
Type IIa

LG705530552  
Report verification at [lgi.org](https://lgi.org)

## PROPORTIONS

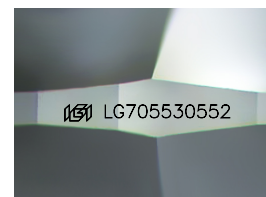


## CLARITY CHARACTERISTICS



## KEY TO SYMBOLS

Red symbols indicate internal characteristics.  
Green symbols indicate external characteristics.



Sample Image Used

## COLOR

D E F G H I J Faint Very Light Light

## CLARITY

IF WS<sup>1-2</sup> VS<sup>1-2</sup> SI<sup>1-2</sup> |<sup>1-3</sup>

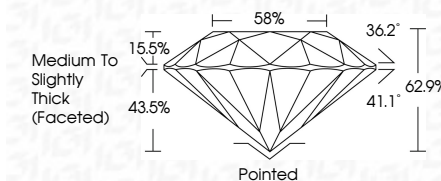
Internally Flawless	Very Very Slightly Included	Very Slightly Included	Slightly Included	Included
------------------------	--------------------------------	---------------------------	----------------------	----------



May 8, 2025	
IGI Report Number	LG705530552
Description	LABORATORY GROWN DIAMOND
Shape and Cutting Style	ROUND BRILLIANT
Measurements	7.32 - 7.37 X 4.62 MM

## GRADING RESULTS

Carat Weight	1.56 CARAT
Color Grade	E
Clarity Grade	VS 2
Cut Grade	EXCELLENT



### ADDITIONAL GRADING INFORMATION

Polish	EXCELLENT
Symmetry	EXCELLENT
Fluorescence	NONE
Inscription(s)	 LG705530552
Comments: This Laboratory Grown Diamond was created by Chemical Vapor Deposition (CVD) growth process.	
Type IIa	



© IGI 2020, International Gemological Institute

FD - 10 20

**www.igi.org**

THIS DOCUMENT WAS PRODUCED WITH THE FOLLOWING SECURITY MEASURES: SPECIAL DOCUMENT PAPER, INK SCREENS, WATERMARK BACKGROUND DESIGNS, HOLOGRAM AND OTHER SECURITY FEATURES NOT LISTED AND DO EXCEED DOCUMENT SECURITY INDUSTRY GUIDELINES

<b>May 8, 2005</b>	<b>Record No.</b> G7005305052	
<b>POLAROID BRILLANT</b>		
<b>Color Weight</b>	<b>32 - 32 - 7.37 X 4.42 MM</b>	
<b>Color Grade</b>		
<b>Clarity Grade</b>		
<b>Cut Grade</b>		
<b>Depth</b>		
<b>Table</b>		
<b>Girdle</b>		
<b>Culet</b>	<b>Medium Thickness</b>	<b>49g Lbs</b>
<b>Polish</b>		
<b>Symmetry</b>		
<b>Fluorescence</b>		
<b>Inscriptions(s)</b>		
<b>Comments:</b> This is a Polycrystalline Silicon grown by Chemical Vapor Deposition (CVD) growth process. Type IIC		