

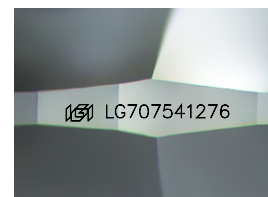
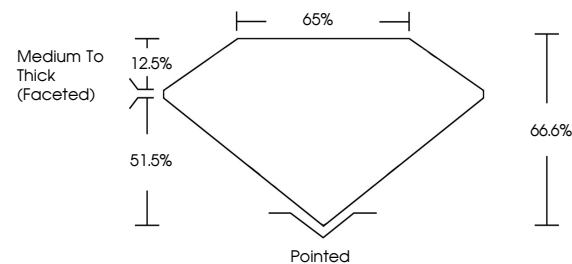


**ELECTRONIC COPY**

## LABORATORY GROWN DIAMOND REPORT

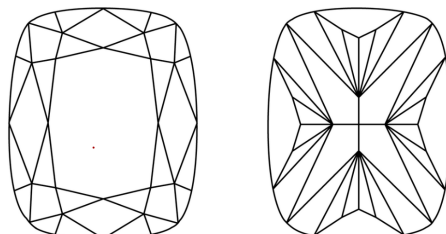
LG707541276  
Report verification at [igi.org](https://igi.org)

## PROPORTIONS



Sample Image Used

## CLARITY CHARACTERISTICS



### KEY TO SYMBOLS

Red symbols indicate internal characteristics.  
Green symbols indicate external characteristics.

## COLOR

D E F G H I J Faint Very Light Light

## CLARITY

IF      VWS<sup>1-2</sup>      VS<sup>1-2</sup>      SI<sup>1-2</sup>      I<sup>1-3</sup>

Internally Flawless	Very Very Slightly Included	Very Slightly Included	Slightly Included	Included
------------------------	--------------------------------	---------------------------	----------------------	----------

## LABORATORY GROWN DIAMOND REPORT



May 17, 2025

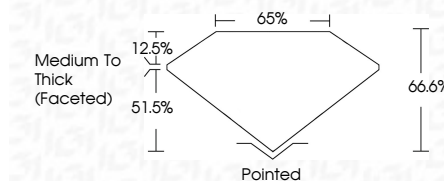
IGI Report Number **LG707541276**Description **LABORATORY GROWN DIAMOND**

Shape and Cutting Style **CUSHION MODIFIED  
BRILLIANT**

Measurements 9.85 X 7.69 X 5.12 MM

## GRADING RESULTS

Carat Weight **3.02 CARATS**

Color Grade **E**Clarity Grade VVS 2

### ADDITIONAL GRADING INFORMATION

Polish EXCELLENT

Symmetry **EXCELLENT**Fluorescence NONInscription(s) 151 LG707541276

Comments: This Laboratory Grown Diamond was created by Chemical Vapor Deposition (CVD) growth process.  
Type IIa



© IGI 2020, International Gemological Institute

FD - 10 20



THIS DOCUMENT WAS PRODUCED WITH THE FOLLOWING SECURITY MEASURES: SPECIAL DOCUMENT PAPER, INK SCREENS, WATERMARK, BACKGROUND DESIGNS, HOLOGRAM AND OTHER SECURITY FEATURES NOT LISTED AND DO EXCEED DOCUMENT SECURITY INDUSTRY GUIDELINES

**www.igi.org**

May 17, 2025  
GI Report No L  
CUSHION MODI

2.85 X 7.69 X 5.12 MM	3.02 CARATS
Carat Weight	E
Color Grade	VVS 2
Clarity Grade	66.6%
Depth	65%
Table	Medium to Thick (faceted)
Girdle	Pointed
Quiet	EXCELLENT
Polish	EXCELLENT
Symmetry	NONE
Fluorescence	4mm (2377614172)

**Comments:**  
This Laboratory Grown Diamond was created by Chemical Vapor Deposition (CVD) growth process.