

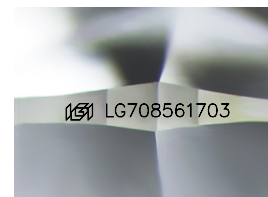
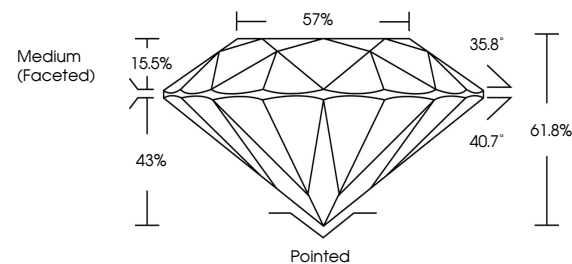


ELECTRONIC COPY

LABORATORY GROWN DIAMOND REPORT

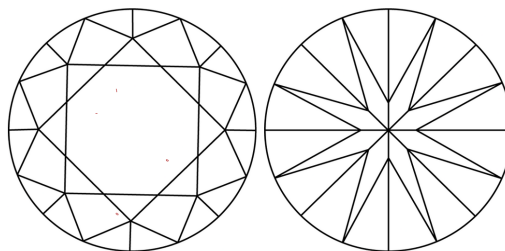
LG708561703
Report verification at igi.org

PROPORTIONS



Sample Image Used

CLARITY CHARACTERISTICS



KEY TO SYMBOLS

Red symbols indicate internal characteristics.
Green symbols indicate external characteristics.

COLOR

D E F G H I J Faint Very Light Light

CLARITY

IF WS¹⁻² VS¹⁻² SI¹⁻² |¹⁻³

| | | | | |
|------------------------|--------------------------------|---------------------------|----------------------|----------|
| Internally Flawless | Very Very Slightly Included | Very Slightly Included | Slightly Included | Included |
|------------------------|--------------------------------|---------------------------|----------------------|----------|



© IGI 2020, International Gemological Institute

FD - 10 20

www.igi.org

LABORATORY GROWN DIAMOND REPORT



May 30, 2025

IGI Report Number **LG708561703**

| | |
|-------------|--------------------------|
| Description | LABORATORY GROWN DIAMOND |
|-------------|--------------------------|

Shape and Cutting Style **ROUND BRILLIANT**

Measurements 6.57 - 6.60 X 4.07 MM

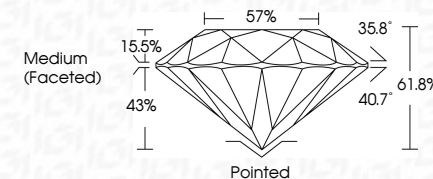
GRADING RESULTS

Carat Weight 1.08 CARAT

Color Grade **E**

Clarity Grade VS 1

Cut Grade **IDEAL**



ADDITIONAL GRADING INFORMATION

Polish **EXCELLENT**Symmetry **EXCELLENT**Fluorescence NONInscription(s) LG708561703

Comments: As Grown - No indication of post-growth treatment.

This Laboratory Grown Diamond was created by High Pressure High Temperature (HPHT) growth process.

Type II



| | |
|-------------------------------|-------------------------|
| May 30, 2026 | |
| G Report No LG70865703 | |
| ROUND BRILLIANT | |
| 6.57 - 6.50 X 4.07 MM | 1.08 CARAT |
| Color Weight | E |
| Color Grade | VS 1 |
| Clarity Grade | IDeal |
| Cut Grade | 61.8% |
| Depth | 57% |
| Table | |
| Girdle | Medium (Faceted) |
| Culet | Pointed |
| Polish | EXCELLENT |
| Symmetry | EXCELLENT |
| Fluorescence | NONE |
| Inscriptions(s) | 69 LG70865703 |

Comments:

- No Growth - No indication of post-growth
- Laboratory Grown Diamond was created by High Pressure High temperature (HPHT) growth process.

Type II