

ELECTRONIC COPY

LABORATORY GROWN DIAMOND REPORT

May 21, 2025	
IGI Report Number	LG708583528
Description	LABORATORY GROWN DIAMOND
Shape and Cutting Style	ROUND BRILLIANT
Measurements	10.98 - 11.04 X 6.84 MM

GRADING RESULTS

Carat Weight	5.09 CARATS
Color Grade	E
Clarity Grade	VVS 1
Cut Grade	IDEAL

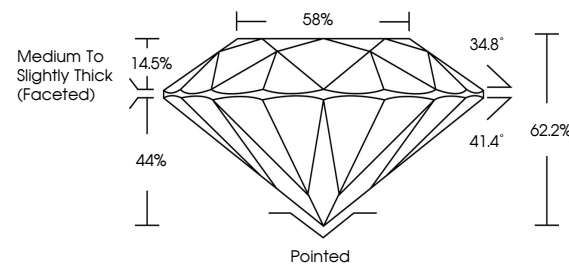
ADDITIONAL GRADING INFORMATION

Polish	EXCELLENT
Symmetry	EXCELLENT
Fluorescence	NONE
Inscription(s)	 LG708583528

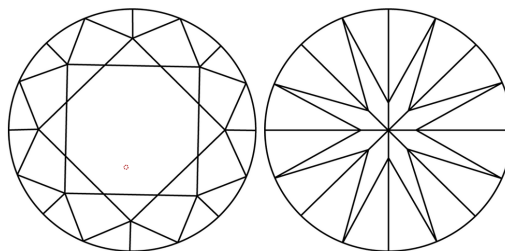
Comments: This Laboratory Grown Diamond was created by Chemical Vapor Deposition (CVD) growth process.
Type IIa

LG708583528
Report verification at igi.org

PROPORTIONS

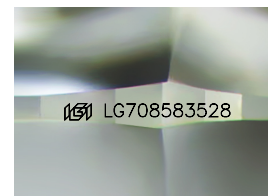


CLARITY CHARACTERISTICS



KEY TO SYMBOLS

Red symbols indicate internal characteristics.
Green symbols indicate external characteristics.



Sample Image Used

COLOR

D E F G H I J Faint Very Light Light

CLARITY

IF WS¹⁻² VS¹⁻² SI¹⁻² |¹⁻³

Internally Flawless	Very Very Slightly Included	Very Slightly Included	Slightly Included	Included
------------------------	--------------------------------	---------------------------	----------------------	----------

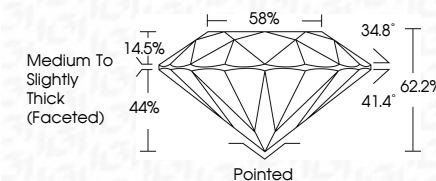
LABORATORY GROWN DIAMOND REPORT



May 21, 2025	
IGI Report Number	LG708583528
Description	LABORATORY GROWN DIAMOND
Shape and Cutting Style	ROUND BRILLIANT
Measurements	10.98 - 11.04 X 6.84 MM

GRADING RESULTS

Carat Weight	5.09 CARATS
Color Grade	E
Clarity Grade	VVS 1
Cut Grade	IDEAL



ADDITIONAL GRADING INFORMATION

Polish	EXCELLENT
Symmetry	EXCELLENT
Fluorescence	NONE
Inscription(s)	 LG708583528
<p>Comments: This Laboratory Grown Diamond was created by Chemical Vapor Deposition (CVD) growth process.</p> <p>Type IIa</p>	



© IGI 2020, International Gemological Institute

FD - 10 20

www.igi.org

THIS DOCUMENT WAS PRODUCED WITH THE FOLLOWING SECURITY MEASURES: SPECIAL DOCUMENT PAPER, INK SCREENS, WATERMARK, BACKGROUND DESIGNS, HOLOGRAM AND OTHER SECURITY FEATURES NOT LISTED AND DO EXCEED DOCUMENT SECURITY INDUSTRY GUIDELINE

May 21, 2025	Color	Clear	Medium	Thick	169	Comments: Growth Rate: Growth Pattern: Induced by Chemical Vapor (CVD) growth process. Type IIa
Ground Report No. G770895328	Carat Weight	10.98 - 11.04 X 6.84 MM				
ROUND BRILLIANT	Color Grade					
	Clarity Grade					
	Cut Grade					
	Depth					
	Table					
	Girdle					
	Culet					
	Polish					
	Symmetry					
	Fluorescence					
	Inscription(s)					