

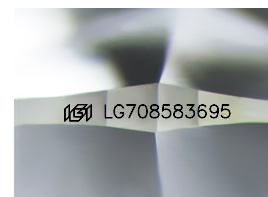
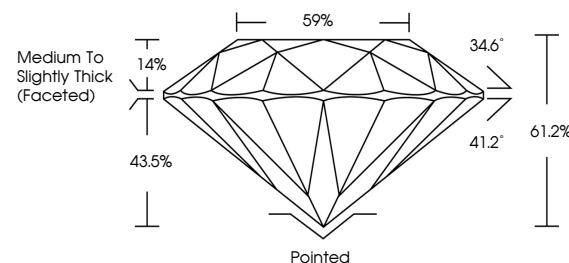


ELECTRONIC COPY

LABORATORY GROWN DIAMOND REPORT

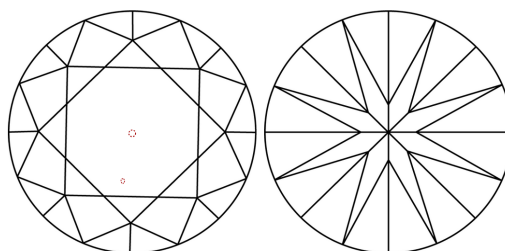
LG708583695
Report verification at igi.org

PROPORTIONS



Sample Image Used

CLARITY CHARACTERISTICS



KEY TO SYMBOLS

Red symbols indicate internal characteristics.
Green symbols indicate external characteristics.

COLOR

D E F G H I J Faint Very Light Light

CLARITY

IF WS¹⁻² VS¹⁻² SI¹⁻² |¹⁻³

Internally Flawless	Very Very Slightly Included	Very Slightly Included	Slightly Included	Included
------------------------	--------------------------------	---------------------------	----------------------	----------

LABORATORY GROWN DIAMOND REPORT



May 20, 2025

IGI Report Number **LG708583695**Description **LABORATORY GROWN DIAMOND**Shape and Cutting Style **ROUND BRILLIANT**

Measurements 8.61 - 8.65 X 5.28 MM

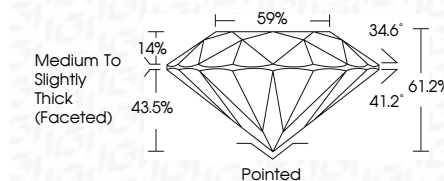
GRADING RESULTS

Carat Weight **2.41 CARATS**

Color Grade D

Clarity Grade VS 1

Cut Grade **IDEAL**



ADDITIONAL GRADING INFORMATION

Polish **EXCELLENT**Symmetry **EXCELLENT**Fluorescence NONIInscription(s) LG708583695

Comments: This Laboratory Grown Diamond was created by Chemical Vapor Deposition (CVD) growth process.

Type IIa



© IGI 2020, International Gemological Institute

FD - 10 20

www.igi.org



THIS DOCUMENT WAS PRODUCED WITH THE FOLLOWING SECURITY MEASURES: SPECIAL DOCUMENT PAPER, INK SCREENS, WATERMARK, BACKGROUND DESIGNS, HOLOGRAM AND OTHER SECURITY FEATURES NOT LISTED AND DO EXCEED DOCUMENT SECURITY INDUSTRY GUIDELINE

May 20, 2025	Color Weight	2.41 CARATS	VS 1 IDEAL 61.2% 59% Medium to Slightly Thick (Faceted)	Pointed	NONE (pg. 157) 65856595	Comments: 1. Gravel Diamond was identified by Chemical Vapor Deposition (CVD) growth process. Type IIa
GI Patent No. US70856595	Color Grade	D		Excellent		
ROUND BRILLIANT	Clarity Grade	VS 1		Excellent		
6.01 - 6.45 X 5.28 MM	Car Grade	IDEAL		Excellent		
	Depth	61.2%		Excellent		
	Table	59%				
	Girdle					
	Culet					
	Polish					
	Symmetry					
	Fluorescence					
	Inscriptions(s)					