



**INTERNATIONAL
GEMOLOGICAL
INSTITUTE**

ELECTRONIC COPY

LG709534394
Report verification at igi.org

LABORATORY GROWN DIAMOND REPORT



May 20, 2025

IGI Report Number **LG709534394**

Description	LABORATORY GROWN DIAMOND
-------------	--------------------------

Shape and Cutting Style **ROUND BRILLIANT**

Measurements	8.75 - 8.80 X 5.42 MM
--------------	-----------------------

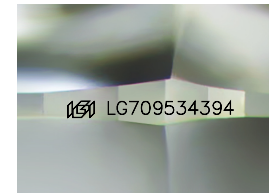
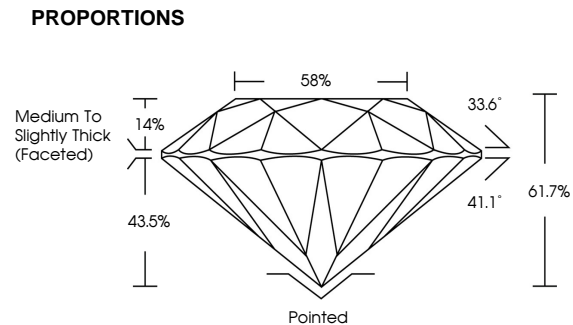
GRADING RESULTS

Carat Weight **2.58 CARATS**

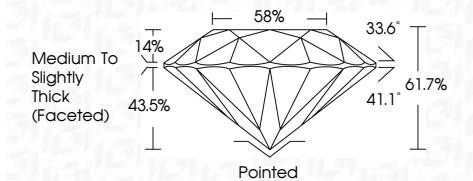
Color Grade	F
-------------	---

Clarity Grade **VVS 2**

Cut Grade **IDEAL**



Sample Image Used



COLOR

D E F G H I J Faint Very Light Light

CLARITY

IF WS¹⁻² VS¹⁻² SI¹⁻² |¹⁻³

Internally Flawless	Very Very Slightly Included	Very Slightly Included	Slightly Included	Included
------------------------	--------------------------------	---------------------------	----------------------	----------



© IGI 2020, International Gemological Institute

FD - 10 20

www.igi.org



IGI

May 20, 2026	Color Weight	2.58 CARATS
Report No. LG70934394	Color Grade	F
ROUND BRILLIANT	Clarity Grade	VVS 2
	Clarity	IDEAL
	Depth	61.7%
	Table	58%
	Girdle	Medium to Slightly Thick (Focused)
	Culet	Pointed
	Polish	EXCELLENT
	Symmetry	EXCELLENT
	Fluorescence	NONE
	Inscriptions(s)	lg6 LG70934394
Comments: This Laboratory Grown Diamond was created by Chemical Vapor Deposition (CVD) growth process. Type IIa		