

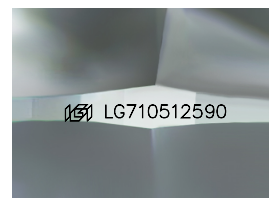
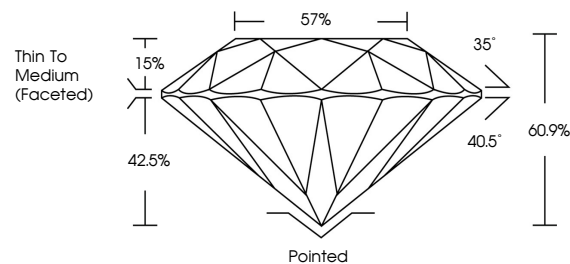


**ELECTRONIC COPY**

## LABORATORY GROWN DIAMOND REPORT

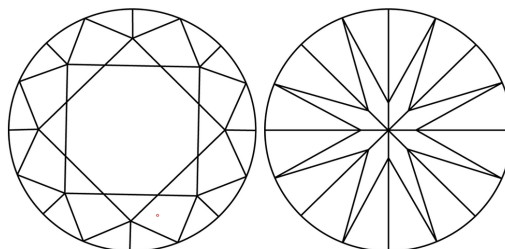
LG710512590  
Report verification at [igi.org](https://igi.org)

## PROPORTIONS



Sample Image Used

## CLARITY CHARACTERISTICS



### KEY TO SYMBOLS

Red symbols indicate internal characteristics.  
Green symbols indicate external characteristics.

## COLOR

D E F G H I J Faint Very Light Light

## CLARITY

IF                      VS<sup>1-2</sup>                      VS<sup>1-2</sup>                      SI<sup>1-2</sup>                      I<sup>1-3</sup>

Internally Flawless	Very Very Slightly Included	Very Slightly Included	Slightly Included	Included
------------------------	--------------------------------	---------------------------	----------------------	----------

## LABORATORY GROWN DIAMOND REPORT



May 23, 2025

IGI Report Number **LG710512590**

Description	LABORATORY GROWN DIAMOND
-------------	--------------------------

Shape and Cutting Style **ROUND BRILLIANT**

Measurements 6.62 - 6.71 X 4.05 MM

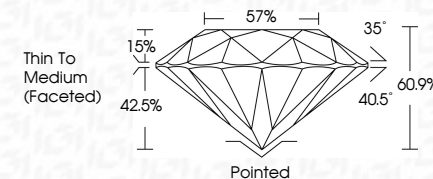
## GRADING RESULTS

Carat Weight **1.09 CARAT**

Color Grade	D
-------------	---

Clarity Grade **VVS 2**

Cut Grade **IDEAL**



### ADDITIONAL GRADING INFORMATION

Polish **EXCELLENT**Symmetry **EXCELLENT**Fluorescence **NONE**Inscription(s)  LG710512590

Comments: As Grown - No indication of post-growth treatment.

This Laboratory Grown Diamond was created by High Pressure High Temperature (HPHT) growth process.  
Type II



© IGI 2020, International Gemological Institute

FD - 10 20



THIS DOCUMENT WAS PRODUCED WITH THE FOLLOWING SECURITY MEASURES: SPECIAL DOCUMENT PAPER, INK SCREENS, WATERMARK, BACKGROUND DESIGNS, HOLOGRAM AND OTHER SECURITY FEATURES NOT LISTED AND DO EXCEED DOCUMENT SECURITY INDUSTRY GUIDELINES

**www.igi.org**

May 28, 2025	1.09 CARAT
GL Report No. LG710512590	
ROUND BRILLIANT	
4.62 - 4.71 X 4.05 MM	
Carat Weight	VVS 2
Color Grade	IDEAL
Clarity Grade	60.9%
Cut Grade	57%
Depth	Thin To Medium
Table	(Face Up)
Girdle	Pointed
Culet	EXCELLENT
Polish	EXCELLENT
Symmetry	NONE
Fluorescence	
Inscriptions(s)	681 LG710512590

Comments: As Grown - No indication of post-growth treatment.  
This Laboratory Grown Diamond was created by High Pressure High Temperature (HPHT) growth process.