

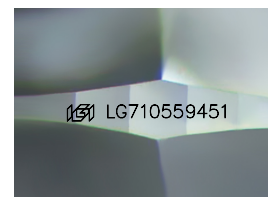
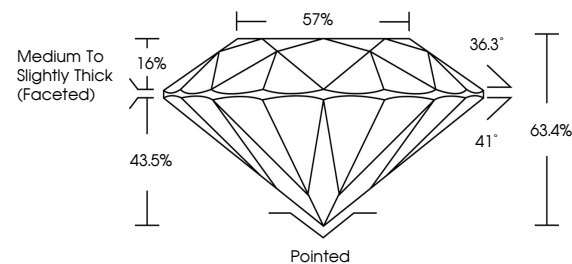


ELECTRONIC COPY

LABORATORY GROWN DIAMOND REPORT

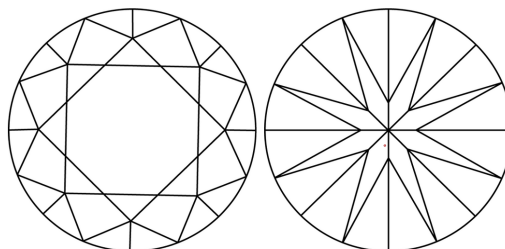
LG710559451
Report verification at igi.org

PROPORTIONS



Sample Image Used

CLARITY CHARACTERISTICS



KEY TO SYMBOLS

Red symbols indicate internal characteristics.
Green symbols indicate external characteristics.

COLOR

D E F G H I J Faint Very Light Light

CLARITY

IF WS¹⁻² VS¹⁻² S¹⁻² |¹⁻³

Internally Flawless	Very Very Slightly Included	Very Slightly Included	Slightly Included	Included
------------------------	--------------------------------	---------------------------	----------------------	----------



© IGI 2020, International Gemological Institute

FD - 10 20

www.igi.org

LABORATORY GROWN DIAMOND REPORT



June 5, 2025

IGI Report Number **LG710559451**Description **LABORATORY GROWN DIAMOND**Shape and Cutting Style **ROUND BRILLIANT**

Measurements 6.43 - 6.46 X 4.09 MM

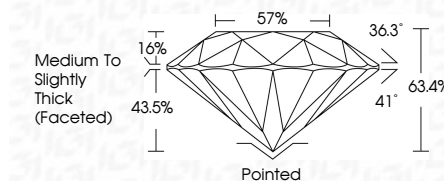
GRADING RESULTS

Carat Weight 1.04 CARAT

Color Grade D

Clarity Grade **VS 2**

Cut Grade **EXCELLENT**



ADDITIONAL GRADING INFORMATION

Polish **EXCELLENT**Symmetry **EXCELLENT**Fluorescence **NONE**Inscription(s)  LG710559451

Comments: As Grown - No indication of post-growth treatment.

This Laboratory Grown Diamond was created by High Pressure High Temperature (HPHT) growth process.

Type II



June 5, 2026	1.04 CARAT
GI Report No. G271059461	D
ROUND BRILLIANT	VVS 2
	EXCELLENT
	63.4%
	57%
	Medium to Slightly Thick (Excellent)
	Polished
	EXCELLENT
	EXCELLENT
	NONE
	G271059461

Comments: As Grown - No indication of post-growth treatment.

This Laboratory Grown Diamond was created by High Pressure High Temperature (HPHT) growth process.