

ELECTRONIC COPY

LABORATORY GROWN DIAMOND REPORT

June 2, 2025	
IGI Report Number	LG712506849
Description	LABORATORY GROWN DIAMOND
Shape and Cutting Style	ROUND BRILLIANT
Measurements	12.28 - 12.37 X 7.44 MM

GRADING RESULTS

Carat Weight	7.03 CARATS
Color Grade	E
Clarity Grade	VS 2
Cut Grade	EXCELLENT

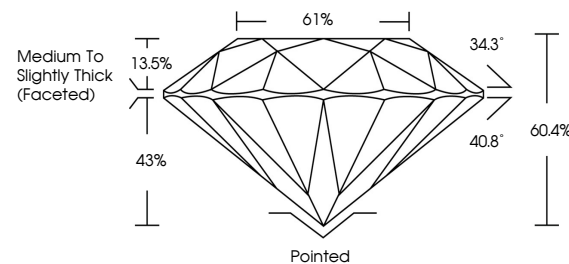
ADDITIONAL GRADING INFORMATION

Polish	EXCELLENT
Symmetry	EXCELLENT
Fluorescence	NONE
Inscription(s)	 LG712506849

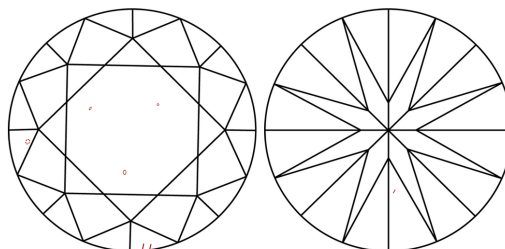
Comments: This Laboratory Grown Diamond was created by Chemical Vapor Deposition (CVD) growth process.
Type IIa

LG712506849
Report verification at igi.org

PROPORTIONS

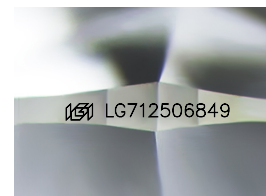


CLARITY CHARACTERISTICS



KEY TO SYMBOLS

Red symbols indicate internal characteristics.
Green symbols indicate external characteristics.



Sample Image Used

COLOR

D E F G H I J Faint Very Light Light

CLARITY

IF WS¹⁻² VS¹⁻² SI¹⁻² |¹⁻³

Internally Flawless	Very Very Slightly Included	Very Slightly Included	Slightly Included	Included
------------------------	--------------------------------	---------------------------	----------------------	----------

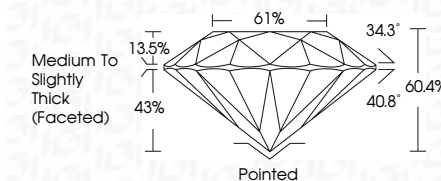
LABORATORY GROWN DIAMOND REPORT



June 2, 2025	
IGI Report Number	LG712506849
Description	LABORATORY GROWN DIAMOND
Shape and Cutting Style	ROUND BRILLIANT
Measurements	12.28 - 12.37 X 7.44 MM

GRADING RESULTS

Carat Weight	7.03 CARATS
Color Grade	E
Clarity Grade	VS 2
Cut Grade	EXCELLENT



ADDITIONAL GRADING INFORMATION

Polish	EXCELLENT
Symmetry	EXCELLENT
Fluorescence	NONE
Inscription(s)	 LG712506849
Comments: This Laboratory Grown Diamond was created by Chemical Vapor Deposition (CVD) growth process.	
Type IIa	



© IGI 2020, International Gemological Institute

FD - 10 20

June 2, 2025
IGI Report No LG712506849
ROUND BRILLIANT

ROUND BRILLIANT	12.28 - 12.37 X 7.44 MM		7.03 CARATS	
	Carat Weight		E	
	Color Grade			
	Clarity Grade	VS 2		
	Cut Grade	EXCELLENT		
	Depth	60.6%		
	Table	61%		
	Girdle	Medium To Slightly Thick (graded)		
	Culet	Pointed		
	Polish	EXCELLENT		
	Symmetry	EXCELLENT		
	Fluorescence	NONE		

Comments:
This Laboratory Grown Diamond was created by Chemical Vapor Deposition (CVD) growth process.