

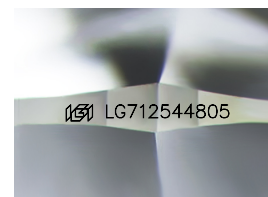
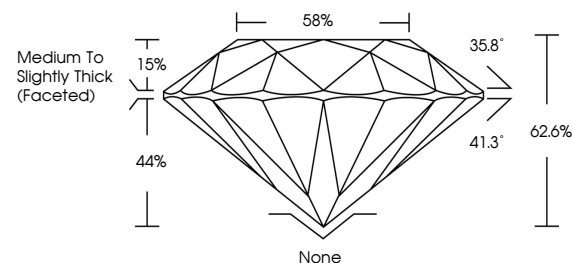


**ELECTRONIC COPY**

## LABORATORY GROWN DIAMOND REPORT

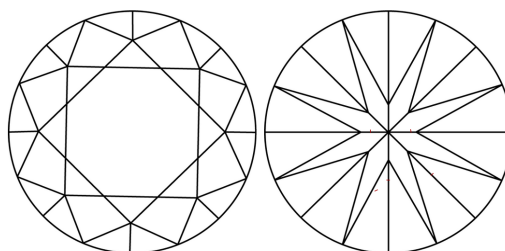
LG712544805  
Report verification at [igi.org](https://igi.org)

## PROPORTIONS



Sample Image Used

## CLARITY CHARACTERISTICS



## KEY TO SYMBOLS

Red symbols indicate internal characteristics.  
Green symbols indicate external characteristics.

## COLOR

D E F G H I J Faint Very Light Light

## CLARITY

IF WS<sup>1-2</sup> VS<sup>1-2</sup> SI<sup>1-2</sup> |<sup>1-3</sup>

Internally Flawless	Very Very Slightly Included	Very Slightly Included	Slightly Included	Included
------------------------	--------------------------------	---------------------------	----------------------	----------



May 30, 2025

IGI Report Number **LG712544805**Description **LABORATORY GROWN DIAMOND**Shape and Cutting Style **ROUND BRILLIANT**

Measurements	6.37 - 6.42 X 4.01 MM
--------------	-----------------------

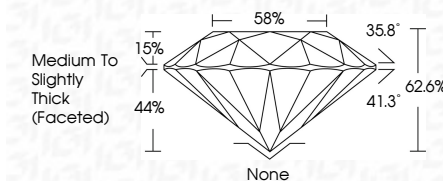
## GRADING RESULTS

Carat Weight **1.01 CARAT**

Color Grade D

Clarity Grade **VVS 2**

Cut Grade **EXCELLENT**



### ADDITIONAL GRADING INFORMATION

Polish **EXCELLENCE**Symmetry **EXCELLENCE**

Fluorescence NONI

Inscription(s)  LG71254480

Comments: As Grown - No indication of post-growth treatment.

This Laboratory Grown Diamond was created by High Pressure High Temperature (HPHT) growth process.

Type II



© IGI 2020, International Gemological Institute

FD - 10 20

**www.igi.org**



THIS DOCUMENT WAS PRODUCED WITH THE FOLLOWING SECURITY MEASURES: SPECIAL DOCUMENT PAPER, INK SCREENS, WATERMARK, BACKGROUND DESIGNS, HOLOGRAM AND OTHER SECURITY FEATURES NOT LISTED AND DO EXCEED DOCUMENT SECURITY INDUSTRY GUIDELINES

May 30, 2025	1.01 CARAT	Color Weight	1.01 CARAT
G1 Report No. G272544805	D	Color Grade	D
ROUND BRILLIANT	VS 2	Clarity Grade	VS 2
	EXCELLENT	Cut Grade	EXCELLENT
	62.6%	Depth	62.6%
	58%	Table	58%
	Medium to Slightly Thick (focused)	Girdle	Medium to Slightly Thick (focused)
	None	Culet	None
	EXCELLENT	Polish	EXCELLENT
	EXCELLENT	Symmetry	EXCELLENT
	NONE	Fluorescence	NONE
	4691 G272544635	Inscriptions	4691 G272544635

Comments:  
 None - No indication of post-growth treatment.  
 The Laboratory Growth Diamond was created by High Pressure High Temperature (HPHT) growth process.  
 Type II