



ELECTRONIC COPY

LABORATORY GROWN DIAMOND REPORT

June 5, 2025	
IGI Report Number	LG712581199
Description	LABORATORY GROWN DIAMOND
Shape and Cutting Style	ROUND BRILLIANT
Measurements	10.01 - 10.06 X 6.28 MM

GRADING RESULTS

Carat Weight	3.85 CARATS
Color Grade	E
Clarity Grade	VVS 2
Cut Grade	EXCELLENT

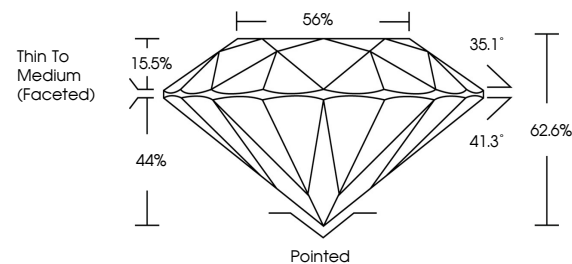
ADDITIONAL GRADING INFORMATION

Polish	EXCELLENT
Symmetry	EXCELLENT
Fluorescence	NONE
Inscription(s)	 LG712581199

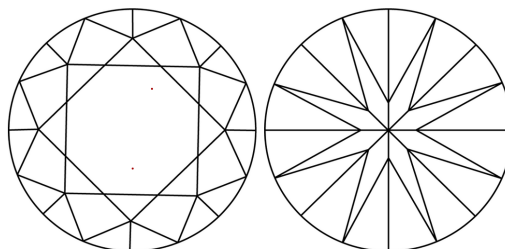
Comments: This Laboratory Grown Diamond was created by Chemical Vapor Deposition (CVD) growth process.
Type IIa

LG712581199
Report verification at igi.org

PROPORTIONS

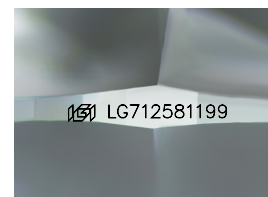


CLARITY CHARACTERISTICS



KEY TO SYMBOLS

Red symbols indicate internal characteristics.
Green symbols indicate external characteristics.



Sample Image Used

COLOR

D E F G H I J Faint Very Light Light

CLARITY

IF VWS¹⁻² VS¹⁻² SI¹⁻² I¹⁻³

Internally Flawless	Very Very Slightly Included	Very Slightly Included	Slightly Included	Included
------------------------	--------------------------------	---------------------------	----------------------	----------

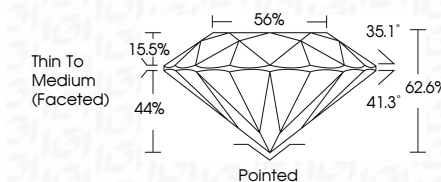
LABORATORY GROWN DIAMOND REPORT



June 5, 2025	
IGI Report Number	LG712581199
Description	LABORATORY GROWN DIAMOND
Shape and Cutting Style	ROUND BRILLIANT
Measurements	10.01 - 10.06 X 6.28 MM

GRADING RESULTS

Carat Weight	3.85 CARATS
Color Grade	E
Clarity Grade	VVS 2
Cut Grade	EXCELLENT



ADDITIONAL GRADING INFORMATION

Polish	EXCELLENT
Symmetry	EXCELLENT
Fluorescence	NONE
Inscription(s)	 LG712581199
Comments: This Laboratory Grown Diamond was created by Chemical Vapor Deposition (CVD) growth process.	
Type IIa	



© IGI 2020, International Gemological Institute

FD - 10 20

www.igi.org

THIS DOCUMENT WAS PRODUCED WITH THE FOLLOWING SECURITY MEASURES: SPECIAL DOCUMENT PAPER, INK SCREENS, WATERMARK BACKGROUND DESIGNS, HOLOGRAM AND OTHER SECURITY FEATURES NOT LISTED AND DO EXCEED DOCUMENT SECURITY INDUSTRY GUIDELINES

June 5, 2025
IGI Report No LG712581199
ROUND BRILLIANT

10.01 - 10.06 X 4.29 MM	3.85 CARATS	VVS 2	EXCELLENT	62.6%	56%	Thin To Medium (Faceted)	Polished	EXCELLENT	NONE
Carat Weight									
Color Grade									
Clarity Grade									
Cut Grade									
Depth									
Table									
Grade									
Culet									
Polish									
Symmetry									
Fluorescence									

Comments:
This Laboratory Grown Diamond was created by Chemical Vapor Deposition (CVD) growth process.