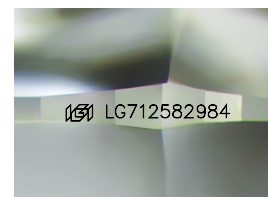
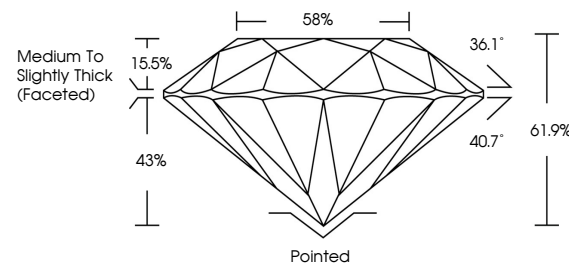




ELECTRONIC COPY

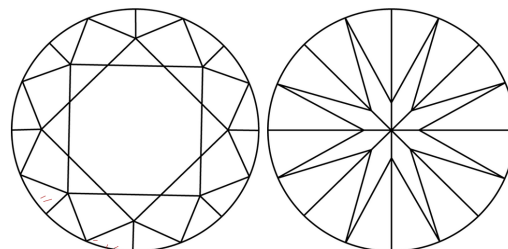
LG712582984
Report verification at igi.org

PROPORTIONS



Sample Image Used

CLARITY CHARACTERISTICS



KEY TO SYMBOLS

Red symbols indicate internal characteristics.
Green symbols indicate external characteristics.

COLOR

D E F G H I J Faint Very Light Light

CLARITY

IF WS¹⁻² VS¹⁻² S¹⁻² |¹⁻³

Internally Flawless	Very Very Slightly Included	Very Slightly Included	Slightly Included	Included
------------------------	--------------------------------	---------------------------	----------------------	----------

LABORATORY GROWN DIAMOND REPORT



June 3, 2025

IGI Report Number **LG712582984**

Description	LABORATORY GROWN DIAMOND
-------------	--------------------------

Shape and Cutting Style **ROUND BRILLIANT**

Measurements 6.38 - 6.42 X 3.96 MM

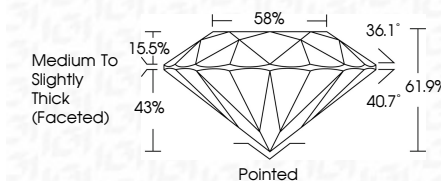
GRADING RESULTS

Carat Weight 1.01 CARAT

Color Grade D

Clarity Grade **VS 2**

Cut Grade **IDEAL**



ADDITIONAL GRADING INFORMATION

Polish **EXCELLENT**Symmetry **EXCELLENT**Fluorescence **NONE**Inscription(s) LG712582984

Comments: As Grown - No indication of post-growth treatment.

This Laboratory Grown Diamond was created by High Pressure High Temperature (HPHT) growth process.

Type II



© IGI 2020, International Gemological Institute

FD - 10 20

www.igi.org

THIS DOCUMENT WAS PRODUCED WITH THE FOLLOWING SECURITY MEASURES: SPECIAL DOCUMENT PAPER, INK SCREENS, WATERMARK, BACKGROUND DESIGNS, HOLOGRAM AND OTHER SECURITY FEATURES NOT LISTED AND DO EXCEED DOCUMENT SECURITY INDUSTRY GUIDELINES

June 3, 2025	Carat Weight	1.01 CARAT
IG Report No. LG712529284	Color Grade	D
ROUND BRILLIANT	Clarity Grade	VVS 2
5.38 - 4.42 X 3.94 MM	Cur. Grade	IDEAL
	Depth	61.9%
	Table	58%
	Grades	Medium to slightly thick faceted
	Culet	Polished
	Pavil	EXCELLENT
	Symmetry	EXCELLENT
	Fluorescence	NONE
	Inscriptions(s)	681 LG712529284
Comments:	<p>Growth - No indication of post-growth This Laboratory Grown Diamond was created by High Pressure High Temperature (HPHT) growth process.</p>	