



ELECTRONIC COPY

LG713542627
Report verification at igi.org



June 6, 2025

IGI Report Number **LG713542627**

Description **LABORATORY GROWN DIAMOND**

Shape and Cutting Style **ROUND BRILLIANT**

Measurements **6.55 - 6.57 X 4.04 MM**

GRADING RESULTS

Carat Weight **1.06 CARAT**

Color Grade **E**

Clarity Grade **VVS 1**

Cut Grade **IDEAL**

June 6, 2025

IGI Report Number **LG713542627**

Description **LABORATORY GROWN DIAMOND**

Shape and Cutting Style **ROUND BRILLIANT**

Measurements **6.55 - 6.57 X 4.04 MM**

GRADING RESULTS

Carat Weight **1.06 CARAT**

Color Grade **E**

Clarity Grade **VVS 1**

Cut Grade **IDEAL**

ADDITIONAL GRADING INFORMATION

Polish **EXCELLENT**

Symmetry **EXCELLENT**

Fluorescence **NONE**

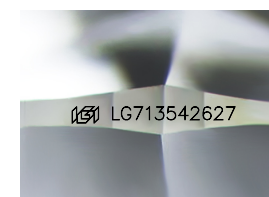
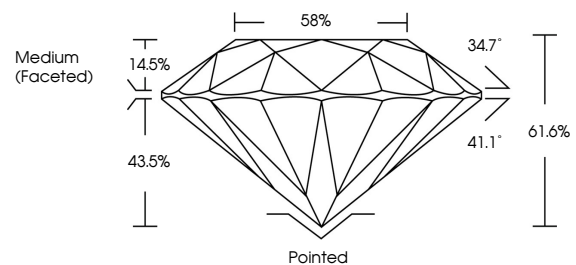
Inscription(s) **IGI LG713542627**

Comments: As Grown - No indication of post-growth treatment.

This Laboratory Grown Diamond was created by High Pressure High Temperature (HPHT) growth process.

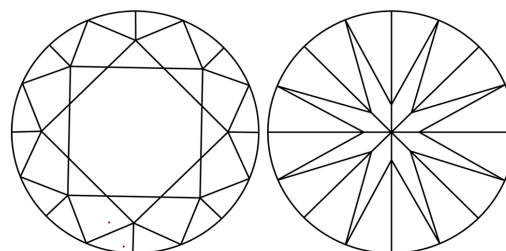
Type II

PROPORTIONS



Sample Image Used

CLARITY CHARACTERISTICS



KEY TO SYMBOLS

Red symbols indicate internal characteristics.
Green symbols indicate external characteristics.

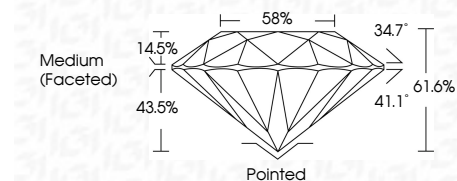
COLOR

D E F G H I J Faint Very Light Light

CLARITY

IF VS¹⁻² VS¹⁻² SI¹⁻² I¹⁻³

Internally Flawless Very Very Slightly Included Very Slightly Included Slightly Included Included



ADDITIONAL GRADING INFORMATION

Polish **EXCELLENT**

Symmetry **EXCELLENT**

Fluorescence **NONE**

Inscription(s) **IGI LG713542627**

Comments: As Grown - No indication of post-growth treatment.

This Laboratory Grown Diamond was created by High Pressure High Temperature (HPHT) growth process.

Type II



IGI



June 6, 2025
IGI Report No LG713542627
ROUND BRILLIANT
6.55 - 6.57 X 4.04 MM
1.06 CARAT
E
VVS 1
IDEAL
61.6%
58%
Medium (Faceted)Pointed
EXCELLENT
EXCELLENT
NONE
IGI LG713542627
Comments: As Grown - No indication of post-growth treatment.
This Laboratory Grown Diamond was created by High Pressure High Temperature (HPHT) growth process.
Type II