

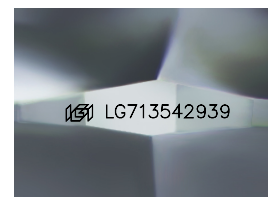
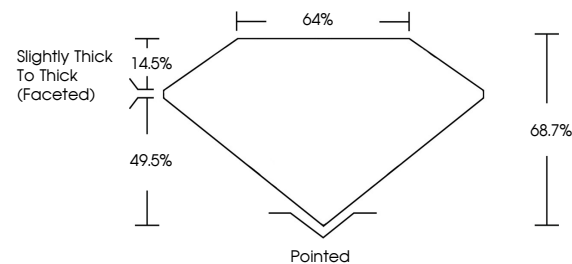


ELECTRONIC COPY

LABORATORY GROWN DIAMOND REPORT

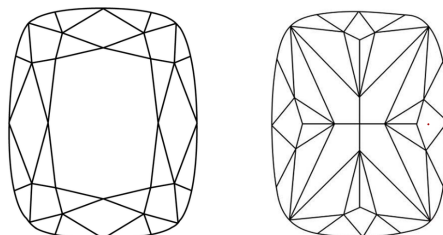
LG713542939
Report verification at igi.org

PROPORTIONS



Sample Image Used

CLARITY CHARACTERISTICS



KEY TO SYMBOLS

Red symbols indicate internal characteristics.
Green symbols indicate external characteristics.

COLOR

D E F G H I J Faint Very Light Light

CLARITY

IF	VS ¹⁻²	VS ¹⁻²	SI ¹⁻²	I ¹⁻³
Internally Flawless	Very Very Slightly Included	Very Slightly Included	Slightly Included	Included

LABORATORY GROWN DIAMOND REPORT



June 7, 2025

IGI Report Number **LG713542939**Description **LABORATORY GROWN DIAMOND**

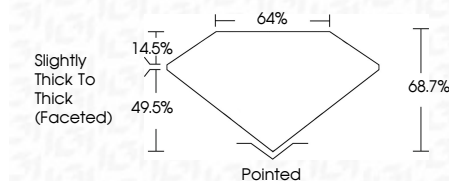
Shape and Cutting Style **CUSHION MODIFIED
BRILLIANT**

Measurements **6.91 X 5.11 X 3.51 MM**

GRADING RESULTS

Carat Weight 1.01 CARAT

Color Grade	D
-------------	---

Clarity Grade VVS 1

ADDITIONAL GRADING INFORMATION

Polish **EXCELLENT**Symmetry **EXCELLENT**Fluorescence **NONE**Inscription(s)  LG713542939

Comments: This Laboratory Grown Diamond was created by Chemical Vapor Deposition (CVD) growth process.
Type IIa



© IGI 2020, International Gemological Institute

FD - 10 20

www.igi.org

THIS DOCUMENT WAS PRODUCED WITH THE FOLLOWING SECURITY MEASURES: SPECIAL DOCUMENT PAPER, INK SCREENS, WATERMARK BACKGROUND DESIGNS, HOLOGRAM AND OTHER SECURITY FEATURES NOT LISTED AND DO EXCEED DOCUMENT SECURITY INDUSTRY GUIDELINES

June 7, 2025
GI Report No LG713542939
VISION MODIFIED BRILLIANT

4.97 X 5.11 X 5.51 MM	1.01 CARAT
Color Weight	
Color Grade	
Clarity Grade	VVS 1
Depth	68.7%
Table	64%
Grade	Slightly Thick To Thick (Faceted)
Culet	Pointed
Polish	EXCELLENT
Symmetry	EXCELLENT
Fluorescence	NONE
Comments (if any)	see / 571 spec page

Comments:
This Laboratory Grown Diamond was
created by Chemical Vapor Deposition
(CVD) growth process.