

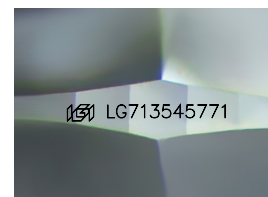
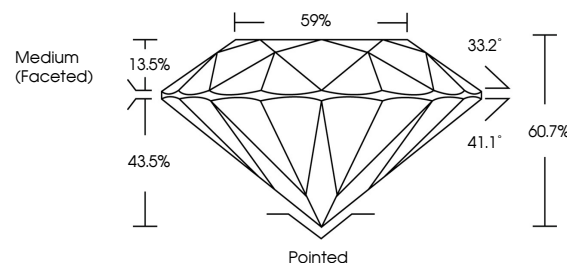


ELECTRONIC COPY

LABORATORY GROWN DIAMOND REPORT

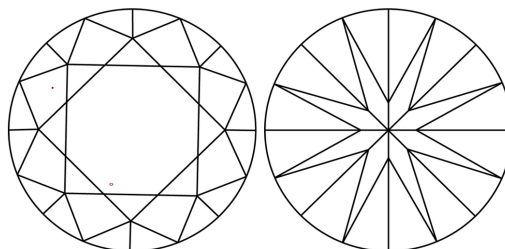
LG713545771
Report verification at iqi.org

PROPORTIONS



Sample Image Used

CLARITY CHARACTERISTICS



KEY TO SYMBOLS

Red symbols indicate internal characteristics.
Green symbols indicate external characteristics.

COLOR

D E F G H I J Faint Very Light Light

CLARITY

IF WS¹⁻² VS¹⁻² SI¹⁻² |¹⁻³

Internally Flawless	Very Very Slightly Included	Very Slightly Included	Slightly Included	Included
------------------------	--------------------------------	---------------------------	----------------------	----------

LABORATORY GROWN DIAMOND REPORT



June 18, 2025

IGI Report Number **LG713545771**Description **LABORATORY GROWN DIAMOND**Shape and Cutting Style **ROUND BRILLIANT**

Measurements 8.14 - 8.23 X 4.97 MM

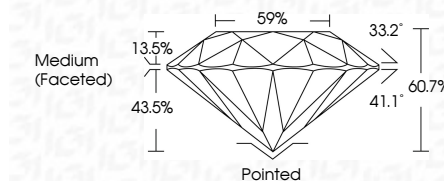
GRADING RESULTS

Carat Weight **2.02 CARATS**

Color Grade **E**

Clarity Grade VS 1

Cut Grade **IDEAL**



ADDITIONAL GRADING INFORMATION

Polish **EXCELLENT**Symmetry **EXCELLENT**Fluorescence **NONE**Inscription(s) LG713545771

Comments: This Laboratory Grown Diamond was created by Chemical Vapor Deposition (CVD) growth process.
Type IIa



© IGI 2020, International Gemological Institute

FD - 10 20



THIS DOCUMENT WAS PRODUCED WITH THE FOLLOWING SECURITY MEASURES: SPECIAL DOCUMENT PAPER, INK SCREENS, WATERMARK, BACKGROUND DESIGNS, HOLOGRAM AND OTHER SECURITY FEATURES NOT LISTED AND DO EXCEED DOCUMENT SECURITY INDUSTRY GUIDELINE

www.igi.org

June 19, 2005	Carat Weight	2.02 CARATS
GI Report No. LG713546771	Color Grade	E
ROUND BRILLIANT	Clarity Grade	VS 1
3.14 - 8.23 X 4.97 MM	Cut Grade	IDEAL
	Depth	60.7%
	Table	59%
	Grain	Medium (frosted)
	Cluef	Pointed
	Polish	EXCELLENT
	Symmetry	EXCELLENT
	Fluorescence	NONE
	Inscriptions(s)	169 LG713546771
	Comments:	
		The Laboratory Grown Diamond was created by Chemical Vapor Deposition (CVD) growth process.
		Type IIA