

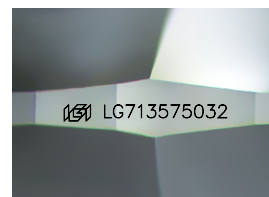
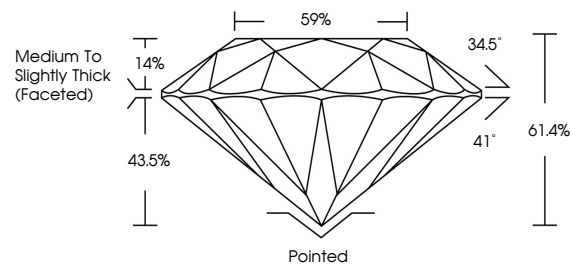


ELECTRONIC COPY

LABORATORY GROWN DIAMOND REPORT

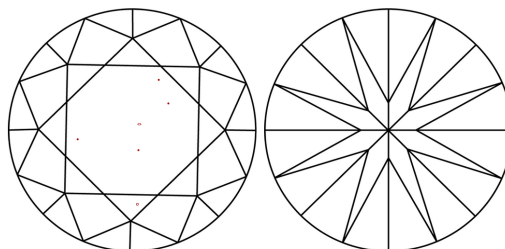
LG713575032
Report verification at igi.org

PROPORTIONS



Sample Image Used

CLARITY CHARACTERISTICS



KEY TO SYMBOLS

Red symbols indicate internal characteristics.
Green symbols indicate external characteristics.

COLOR

D E F G H I J Faint Very Light Light

CLARITY

IF WS¹⁻² VS¹⁻² SI¹⁻² |¹⁻³

Internally Flawless	Very Very Slightly Included	Very Slightly Included	Slightly Included	Included
------------------------	--------------------------------	---------------------------	----------------------	----------

LABORATORY GROWN DIAMOND REPORT



June 10, 2025

IGI Report Number **LG713575032**

Description **LABORATORY GROWN DIAMOND**Shape and Cutting Style **ROUND BRILLIANT**

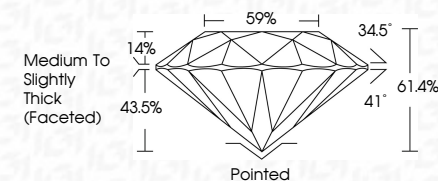
Measurements 9.25 - 9.31 X 5.69 MM

GRADING RESULTS

Carat Weight **3.05 CARATS**

Color Grade FClarity Grade VVS 2

Cut Grade **IDEAL**



ADDITIONAL GRADING INFORMATION

Polish **EXCELLENT**Symmetry **EXCELLENT**Fluorescence **NONE**Inscription(s) LG713575032

Comments: This Laboratory Grown Diamond was created by Chemical Vapor Deposition (CVD) growth process.
Type IIa



IG



© IGI 2020, International Gemological Institute

FD - 10 20

www.igi.org



THIS DOCUMENT WAS PRODUCED WITH THE FOLLOWING SECURITY MEASURES: SPECIAL DOCUMENT PAPER, INK SCREENS, WATERMARK, BACKGROUND DESIGNS, HOLOGRAM AND OTHER SECURITY FEATURES NOT LISTED AND DO EXCEED DOCUMENT SECURITY INDUSTRY GUIDELINES

June 10, 2025
GI Report No LG713575032
ROUND BRILLIANT

2.25 - 9.31 X 5.69 MM	3.05 CARATS	VVS 2	Pointed
Carat Weight	IDEAL	61.4%	EXCELLENT
Color Grade	59%	Medium to slightly Thick (faceted)	EXCELLENT
Clarity Grade			NONE
Cut Grade			4mm (21.5mm)
Depth			Fluorescence
Table			Polish
Girdle			Symmetry
			Fluorescence

Comments:
This Laboratory Grown Diamond was created by Chemical Vapor Deposition (CVD) growth process.