

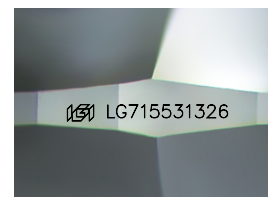
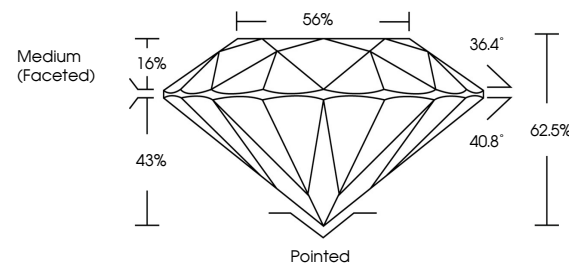


ELECTRONIC COPY

LABORATORY GROWN DIAMOND REPORT

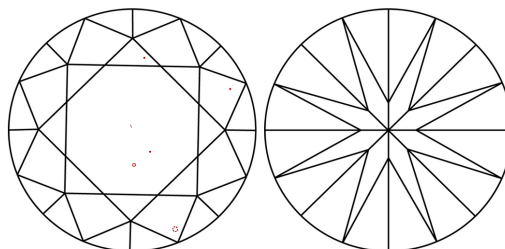
LG715531326
Report verification at igi.org

PROPORTIONS



Sample Image Used

CLARITY CHARACTERISTICS



KEY TO SYMBOLS

Red symbols indicate internal characteristics.
Green symbols indicate external characteristics.

COLOR

D E F G H I J Faint Very Light Light

CLARITY

IF WS¹⁻² VS¹⁻² SI¹⁻² |¹⁻³

Internally Flawless	Very Very Slightly Included	Very Slightly Included	Slightly Included	Included
---------------------	-----------------------------	------------------------	-------------------	----------



June 11, 2025

IGI Report Number **LG715531326**Description **LABORATORY GROWN DIAMOND**Shape and Cutting Style **ROUND BRILLIANT**

Measurements 7.12 - 7.16 X 4.46 MM

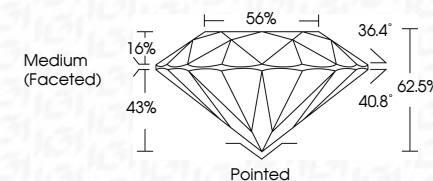
GRADING RESULTS

Carat Weight **1.41 CARAT**

Color Grade	E
-------------	---

Clarity Grade VS 1

Cut Grade **EXCELLENT**



ADDITIONAL GRADING INFORMATION

Polish **EXCELLENT**

Symmetry **EXCELLENT**

Fluorescence **NONE**Inscription(s) LG715531326

Comments: This Laboratory Grown Diamond was created by Chemical Vapor Deposition (CVD) growth process.
Type IIa



© IGI 2020, International Gemological Institute

FD - 10 20

www.igi.org

THIS DOCUMENT WAS PRODUCED WITH THE FOLLOWING SECURITY MEASURES: SPECIAL DOCUMENT PAPER, INK SCREENS, WATERMARK BACKGROUND DESIGNS, HOLOGRAM AND OTHER SECURITY FEATURES NOT LISTED AND DO EXCEED DOCUMENT SECURITY INDUSTRY GUIDELINES

June 11, 2025
GI Report No LG715531326
ROUND BRILLIANT

ROUND BRILLIANT	7.12 - 7.16 X 4.46 MM	1.41 CARAT	VS 1	EXCELLENT	62.5%	56%	Medium (Excellent)
	Carat Weight		Clarity Grade	Cut Grade	Depth	Table	Girdle
	Color Grade						

	Pointed	EXCELLENT	EXCELLENT	NONE
Culet				
Polish				
Symmetry				
Fluorescence				

Comments:
This Laboratory Grown Diamond was created by Chemical Vapor Deposition (CVD) growth process.