



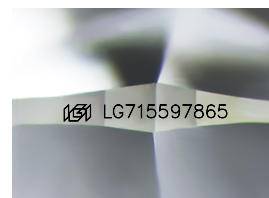
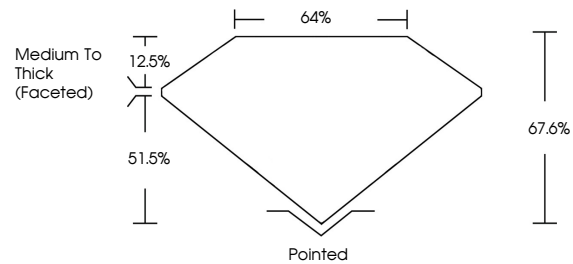
**INTERNATIONAL  
GEMOLOGICAL  
INSTITUTE**

**ELECTRONIC COPY**

## LABORATORY GROWN DIAMOND REPORT

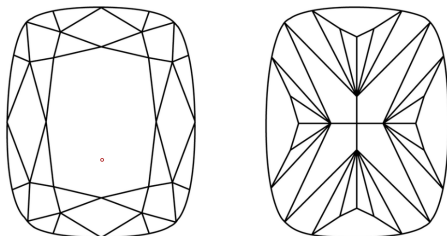
LG715597865  
Report verification at [igi.org](https://igi.org)

## PROPORTIONS



Sample Image Used

## CLARITY CHARACTERISTICS



## KEY TO SYMBOLS

Red symbols indicate internal characteristics.  
Green symbols indicate external characteristics.

**COLOR**

D E F G H I J Faint Very Light Light

## CLARITY

IF      WS<sup>1-2</sup>      VS<sup>1-2</sup>      SI<sup>1-2</sup>      I<sup>1-3</sup>

Internally Flawless	Very Very Slightly Included	Very Slightly Included	Slightly Included	Included
------------------------	--------------------------------	---------------------------	----------------------	----------



© IGI 2020, International Gemological Institute

FD - 10 20

**www.igi.org**



THIS DOCUMENT WAS PRODUCED WITH THE FOLLOWING SECURITY MEASURES: SPECIAL DOCUMENT PAPER, INK SCREENS, WATERMARK BACKGROUND DESIGNS, HOLOGRAM AND OTHER SECURITY FEATURES NOT LISTED AND DO EXCEED DOCUMENT SECURITY INDUSTRY GUIDELINES.

## LABORATORY GROWN DIAMOND REPORT



June 18, 2025

IGI Report Number **LG715597865**

Description	LABORATORY GROWN DIAMOND
-------------	--------------------------

Shape and Cutting Style **CUSHION MODIFIED  
BRILLIANT**

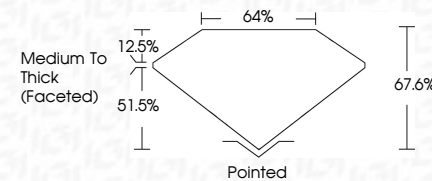
Measurements **11.34 X 8.26 X 5.58 MM**

## GRADING RESULTS

Carat Weight **4.03 CARATS**

Color Grade	D
-------------	---

Clarity Grade VS 1



### ADDITIONAL GRADING INFORMATION

Polish **EXCELLENT**Symmetry **EXCELLENT**Fluorescence NONIInscription(s)  LG715597865

Comments: This Laboratory Grown Diamond was created by Chemical Vapor Deposition (CVD) growth process.  
Type IIa



IG

<b>June 19, 2025</b>	<b>4.03 CARATS</b>	<b>Vs 1</b>	<b>67.6%</b>	<b>64%</b>	<b>Poished</b>	<b>NONE</b>	<b>I691 LG71597765</b>	<b>Comments:</b>
<b>G Report No LG71597765</b>	<b>Color Weight</b>	<b>Clarity Grade</b>	<b>Depth</b>	<b>Table</b>	<b>Excellent</b>	<b>EXCELLENT</b>		<b>This Laboratory Grown Diamond was created by Chemical Vapor Deposition (CVD) growth process.</b>
<b>CUSHION MODIFIED BRILLIANT</b>	<b>11.34 X 8.26 X 5.68 MM</b>	<b>Carat Weight</b>	<b>Grade</b>	<b>Medium To Thick (rounded)</b>	<b>EXCELLENT</b>	<b>NONE</b>		<b>Type IId</b>
					<b>Symmetry</b>	<b>Fluorescence</b>		
					<b>Polish</b>	<b>Inscription(s)</b>		
					<b>Culet</b>			