



**INTERNATIONAL  
GEMOLOGICAL  
INSTITUTE**

**ELECTRONIC COPY**

LG717510528  
Report verification at [igi.org](https://igi.org)

LABORATORY GROWN DIAMOND REPORT



June 18, 2025

IGI Report Number **LG717510528**

Description	LABORATORY GROWN DIAMOND
-------------	--------------------------

Shape and Cutting Style **ROUND BRILLIANT**

Measurements	10.90 - 10.95 X 6.59 MM
--------------	-------------------------

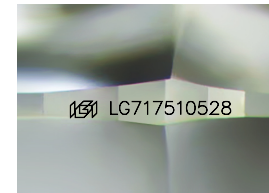
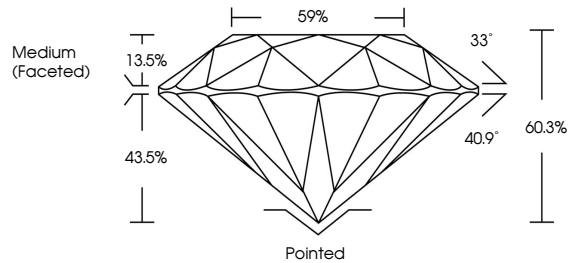
## GRADING RESULTS

Carat Weight **4.83 CARATS**

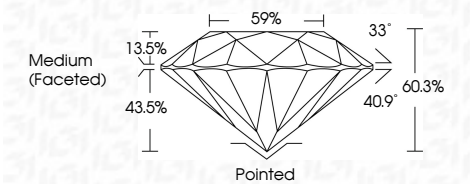
Color Grade **E**

Clarity Grade VS 1

Cut Grade **IDEAL**



Sample Image Used



## COLOR

D E F G H I J Faint Very Light Light

## CLARITY

IF VVS<sup>1-2</sup> VS<sup>1-2</sup> SI<sup>1-2</sup> |<sup>1-</sup>

Internally Flawless	Very Very Slightly Included	Very Slightly Included	Slightly Included	Included
------------------------	--------------------------------	---------------------------	----------------------	----------



© IGI 2020, International Gemological Institute

FD - 10 20

**www.igi.org**



THIS DOCUMENT WAS PRODUCED WITH THE FOLLOWING SECURITY MEASURES: SPECIAL DOCUMENT PAPER, INK SCREENS, WATERMARK, BACKGROUND DESIGNS, HOLOGRAM AND OTHER SECURITY FEATURES NOT LISTED AND DO EXCEED DOCUMENT SECURITY INDUSTRY GUIDELINES



IGI

June 18, 2025  
IGI Report No LG717510528  
ROUND BRILLIANT

10.90 - 10.95 X 6.59 MM

10.90 - 10.90 X 0.07 mm	4.83 CARATS	E
Carat Weight		
Color Grade		

Color Grade	E
Clarity Grade	VS 1

Clarity Grade	VS 1
Out Grade	IDEAL
Depth	60.3%

Depth	60.3%
Table	59%

Circle	Medium (Faceted)

	Culet	Pointed	Excellent
Polish			

Polish	EXCELLENT
Symmetry	EXCELLENT

Fluorescence	NONE
Inscription(s)	191 LG717510528

Comments: 10/15/2017

**Comments:**  
This Laboratory Grown Diamond was created by Chemical Vapor Deposition

**(CVD) growth process,  
Type IIa**