



**ELECTRONIC COPY**

## LABORATORY GROWN DIAMOND REPORT

|                         |                          |
|-------------------------|--------------------------|
| September 9, 2025       |                          |
| IGI Report Number       | LG717534259              |
| Description             | LABORATORY GROWN DIAMOND |
| Shape and Cutting Style | ROUND BRILLIANT          |
| Measurements            | 6.48 - 6.51 X 3.96 MM    |

## GRADING RESULTS

|               |                     |
|---------------|---------------------|
| Carat Weight  | 1.03 CARAT          |
| Color Grade   | D                   |
| Clarity Grade | INTERNALLY FLAWLESS |
| Cut Grade     | IDEAL               |

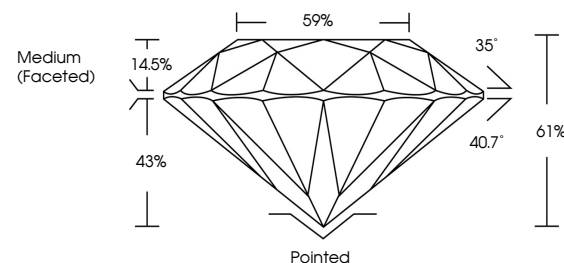
### ADDITIONAL GRADING INFORMATION

|                |                            |
|----------------|----------------------------|
| Polish         | EXCELLENT                  |
| Symmetry       | EXCELLENT                  |
| Fluorescence   | NONE                       |
| Inscription(s) | <del>151</del> LG717534259 |

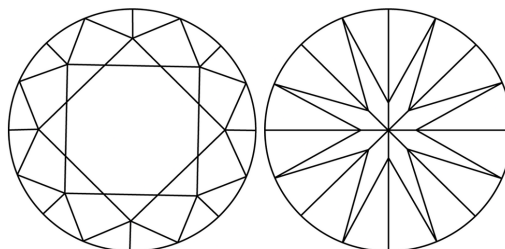
Comments: As Grown - No indication of post-growth treatment.  
This Laboratory Grown Diamond was created by High Pressure High Temperature (HPHT) growth process.  
Type II

LG717534259  
Report verification at [igi.org](https://igi.org)

## PROPORTIONS

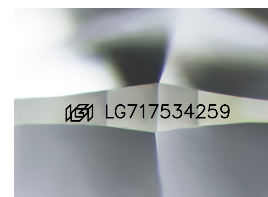


## CLARITY CHARACTERISTICS



### KEY TO SYMBOLS

Red symbols indicate internal characteristics.  
Green symbols indicate external characteristics.



Sample Image Used

## COLOR

D E F G H I J Faint Very Light Light

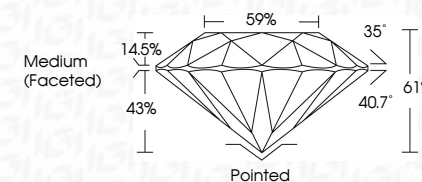
## CLARITY

IF      WS<sup>1-2</sup>      VS<sup>1-2</sup>      SI<sup>1-2</sup>      I<sup>1-3</sup>

|                        |                                |                           |                      |          |
|------------------------|--------------------------------|---------------------------|----------------------|----------|
| Internally<br>Flawless | Very Very<br>Slightly Included | Very<br>Slightly Included | Slightly<br>Included | Included |
|------------------------|--------------------------------|---------------------------|----------------------|----------|



|                         |                          |
|-------------------------|--------------------------|
| September 9, 2025       |                          |
| IGI Report Number       | LG717534259              |
| Description             | LABORATORY GROWN DIAMOND |
| Shape and Cutting Style | ROUND BRILLIANT          |
| Measurements            | 6.48 - 6.51 X 3.96 MM    |
| GRADING RESULTS         |                          |
| Carat Weight            | 1.03 CARAT               |
| Color Grade             | D                        |
| Clarity Grade           | INTERNALLY FLAWLESS      |
| Cut Grade               | IDEAL                    |



### ADDITIONAL GRADING INFORMATION

|  |   |
|--|---|
| Polish   | EXCELLENT   |
| Symmetry   | EXCELLENT   |
| Fluorescence   | NONE  |
| Inscription(s)   |  LG717534259 |
| Comments: As Grown - No indication of post-growth treatment.                                       |   |
| This Laboratory Grown Diamond was created by High Pressure High Temperature (HPHT) growth process. |   |
| Type II  |   |



IG



© IGI 2020, International Gemological Institute

FD - 10 20



THIS DOCUMENT WAS PRODUCED WITH THE FOLLOWING SECURITY MEASURES: SPECIAL DOCUMENT PAPER, INK SCREENS, WATERMARK, BACKGROUND DESIGNS, HOLOGRAM AND OTHER SECURITY FEATURES NOT LISTED AND DO EXCEED DOCUMENT SECURITY INDUSTRY GUIDELINE

**www.igi.org**

September 9, 2025  
ICI Report No LG717534259  
ROUND BRILLIANT

|                       |               |                  |
|-----------------------|---------------|------------------|
| 6.48 - 6.51 X 5.95 MM | Carat Weight  | 1.08 CARAT       |
|                       | Color Grade   | D                |
|                       | Clarity Grade | IF               |
|                       | Cut Grade     | IDEAL            |
|                       | Depth         | 61%              |
|                       | Table         | 59%              |
|                       | Girdle        | Medium (Faceted) |
|                       | Culet         | Pointed          |
|                       | Polish        | EXCELLENT        |
|                       | Symmetry      | EXCELLENT        |
|                       | Fluorescence  | NONE             |

**Comments:**  
As Grown - No indication of post-growth treatment.  
This Laboratory Grown Diamond was created by High Pressure High Temperature (HPHT) growth process.