



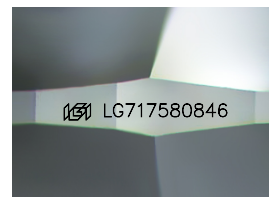
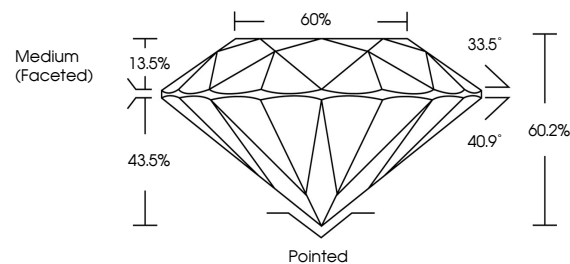
**INTERNATIONAL
GEMOLOGICAL
INSTITUTE**

ELECTRONIC COPY

LABORATORY GROWN DIAMOND REPORT

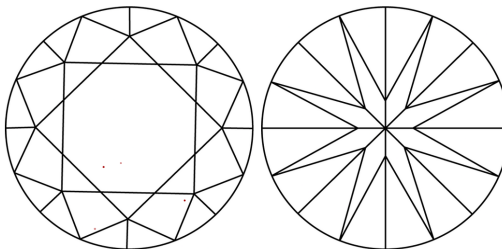
LG717580846
Report verification at igi.org

PROPORTIONS



Sample Image Used

CLARITY CHARACTERISTICS



KEY TO SYMBOLS

Red symbols indicate internal characteristics.
Green symbols indicate external characteristics.

COLOR

D E F G H I J Faint Very Light Light

CLARITY

IF WS¹⁻² VS¹⁻² SI¹⁻² |¹⁻³

| | | | | |
|------------------------|--------------------------------|---------------------------|----------------------|----------|
| Internally Flawless | Very Very Slightly Included | Very Slightly Included | Slightly Included | Included |
|------------------------|--------------------------------|---------------------------|----------------------|----------|



© IGI 2020, International Gemological Institute

FD - 10 20

www.igi.org

THIS DOCUMENT WAS PRODUCED WITH THE FOLLOWING SECURITY MEASURES: SPECIAL DOCUMENT PAPER, INK SCREENS, WATERMARK, BACKGROUND DESIGNS, HOLOGRAM AND OTHER SECURITY FEATURES NOT LISTED AND DO EXCEED DOCUMENT SECURITY INDUSTRY GUIDELINES

LABORATORY GROWN DIAMOND REPORT



July 25, 2025

IGI Report Number **LG717580846**

| | |
|-------------|--------------------------|
| Description | LABORATORY GROWN DIAMOND |
|-------------|--------------------------|

Shape and Cutting Style **ROUND BRILLIANT**

Measurements 9.07 - 9.10 X 5.46 MM

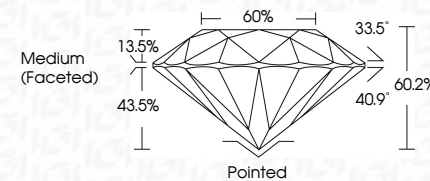
GRADING RESULTS

Carat Weight **2.74 CARATS**

| | |
|-------------|---|
| Color Grade | E |
|-------------|---|

Clarity Grade **VVS 2**

Cut Grade **IDEAL**



ADDITIONAL GRADING INFORMATION

Polish **EXCELLENCE**Symmetry **EXCELLENCE**Fluorescence NONIInscription(s) LG71758084

Comments: This Laboratory Grown Diamond was created by Chemical Vapor Deposition (CVD) growth process.
Type IIa



IG

| | |
|--|----------------------------|
| July 25, 2025 | IGI Report No. I6717590846 |
| ROUND BRILLIANT | |
| 9.07 - 9.10 X 5.46 MM | 2.74 CARATS |
| Color Weight | E |
| Color Grade | VVS 2 |
| Clarity Grade | IDEAL |
| Depth | 61.2% |
| Table | 60% |
| Girdle | Medium (Faceted) |
| Culet | Pointed |
| Polish | EXCELLENT |
| Symmetry | EXCELLENT |
| Fluorescence | NONE |
| Inscription(s) | 681 L6717590846 |
| Comments: | |
| This Laboratory Gem Diamond was created by Gemcap Vapor Deposition (CVD) growth process. | |
| Type IIA | |