



**ELECTRONIC COPY**

## LABORATORY GROWN DIAMOND REPORT

August 14, 2025	
IGI Report Number	LG717581930
Description	LABORATORY GROWN DIAMOND
Shape and Cutting Style	ROUND BRILLIANT
Measurements	6.96 - 6.98 X 4.25 MM

## GRADING RESULTS

Carat Weight	1.27 CARAT
Color Grade	D
Clarity Grade	VS 2
Cut Grade	IDEAL

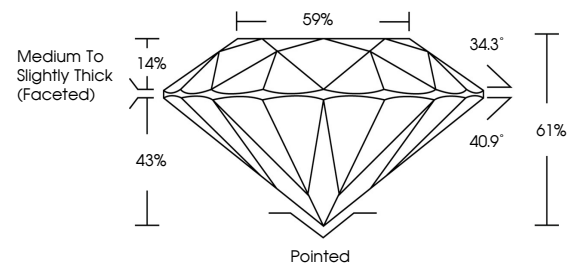
### ADDITIONAL GRADING INFORMATION

Polish	EXCELLENT
Symmetry	EXCELLENT
Fluorescence	NONE
Inscription(s)	 LG717581930

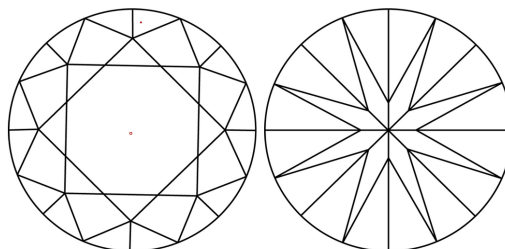
Comments: This Laboratory Grown Diamond was created by Chemical Vapor Deposition (CVD) growth process.  
Type IIa

LG717581930  
Report verification at [igi.org](https://igi.org)

## PROPORTIONS

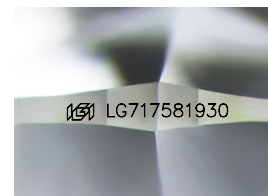


## CLARITY CHARACTERISTICS



## KEY TO SYMBOLS

Red symbols indicate internal characteristics.  
Green symbols indicate external characteristics.



Sample Image Used

## COLOR

D E F G H I J Faint Very Light Light

## CLARITY

IF                      WS<sup>1-2</sup>                      VS<sup>1-2</sup>                      SI<sup>1-2</sup>                      |<sup>1-3</sup>

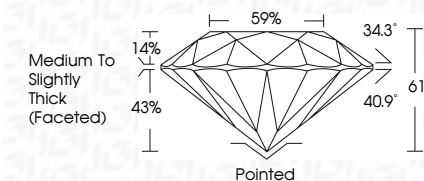
Internally Flawless	Very Very Slightly Included	Very Slightly Included	Slightly Included	Included
------------------------	--------------------------------	---------------------------	----------------------	----------



August 14, 2025	
IGI Report Number	LG717581930
Description	LABORATORY GROWN DIAMOND
Shape and Cutting Style	ROUND BRILLIANT
Measurements	6.96 - 6.98 X 4.25 MM

## GRADING RESULTS

Carat Weight	1.27 CARAT
Color Grade	D
Clarity Grade	VS 2
Cut Grade	IDEAL



### ADDITIONAL GRADING INFORMATION

Polish	EXCELLENT
Symmetry	EXCELLENT
Fluorescence	NONE
Inscription(s)	<del>153</del> LG717581930
<p>Comments: This Laboratory Grown Diamond was created by Chemical Vapor Deposition (CVD) growth process.</p> <p>Type IIa</p>	



© IGI 2020, International Gemological Institute

FD - 10 20

**www.igi.org**



THIS DOCUMENT WAS PRODUCED WITH THE FOLLOWING SECURITY MEASURES: SPECIAL DOCUMENT PAPER, INK SCREENS, WATERMARK, BACKGROUND DESIGNS, HOLOGRAM AND OTHER SECURITY FEATURES NOT LISTED AND DO EXCEED DOCUMENT SECURITY INDUSTRY GUIDELINES

	August 14, 2026
	GJ Report No LG77981930
	ROUND BRILLIANT
	.65 - .68 X .68 X 4.25 MM
	Carat Weight
	Color Grade
	D
	VVS 2
	IDeal
	s1%
	s9%
	Medium to Slightly Thick Faceted)
	Poished
	ECElEent
	BCElEent
	NONE
	#G1LG77981930
Comments:	Grown Diamond was created by Chemical Vapor Deposition (CVD) growth process.
Type IIG	