

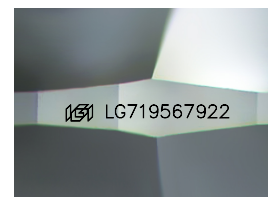
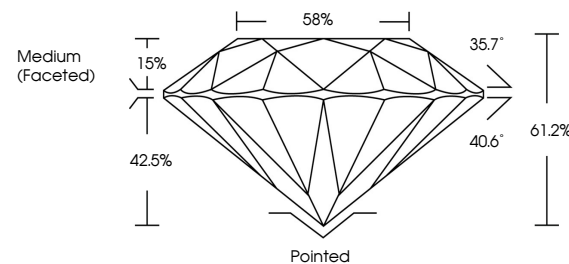


ELECTRONIC COPY

LABORATORY GROWN DIAMOND REPORT

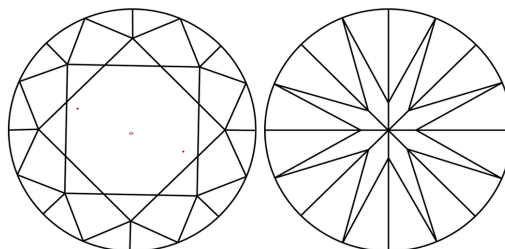
LG719567922
Report verification at igi.org

PROPORTIONS



Sample Image Used

CLARITY CHARACTERISTICS



KEY TO SYMBOLS

Red symbols indicate internal characteristics.
Green symbols indicate external characteristics.

COLOR

D E F G H I J Faint Very Light Light

CLARITY

IF WS¹⁻² VS¹⁻² SI¹⁻² |¹⁻³

| | | | | |
|------------------------|--------------------------------|---------------------------|----------------------|----------|
| Internally Flawless | Very Very Slightly Included | Very Slightly Included | Slightly Included | Included |
|------------------------|--------------------------------|---------------------------|----------------------|----------|

LABORATORY GROWN DIAMOND REPORT



June 27, 2025

IGI Report Number **LG719567922**Description **LABORATORY GROWN DIAMOND**Shape and Cutting Style **ROUND BRILLIANT**

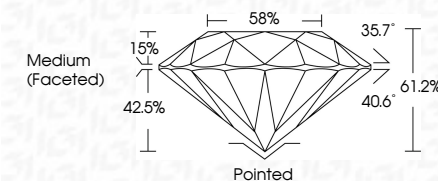
Measurements 10.16 - 10.19 X 6.23 MM

GRADING RESULTS

Carat Weight **3.99 CARATS**

Color Grade **E**Clarity Grade **VVS 2**

Cut Grade **IDEAL**



ADDITIONAL GRADING INFORMATION

Polish **EXCELLENT**Symmetry **EXCELLENT**Fluorescence **NONE**Inscription(s) LG719567922

Comments: This Laboratory Grown Diamond was created by Chemical Vapor Deposition (CVD) growth process.
Type IIa



© IGI 2020, International Gemological Institute

FD - 10 20



THIS DOCUMENT WAS PRODUCED WITH THE FOLLOWING SECURITY MEASURES: SPECIAL DOCUMENT PAPER, INK SCREENS, WATERMARK, BACKGROUND DESIGNS, HOLOGRAM AND OTHER SECURITY FEATURES NOT LISTED AND DO EXCEED DOCUMENT SECURITY INDUSTRY GUIDELINES

www.igi.org

| | | |
|---------------------------|-----------------|---|
| June 27, 2005 | Carat Weight | 3.99 CARATS |
| GI Report No. LG719567922 | Color Grade | E |
| ROUND BRILLIANT | Clarity Grade | VVS 2 |
| 10.10 - 10.19 X 6.23 MM | Cut Grade | IDEAL |
| | Depth | 61.2% |
| | Table | 59% |
| | Grades | Medium (Frosted) |
| | Clue? | Pointed |
| | Polish | EXCELLENT |
| | Symmetry | EXCELLENT |
| | Fluorescence | NONE |
| | Inscriptions(s) | 169 LG719567922 |
| | Comments: | |
| | | The Laboratory Grown Diamond was created by Chemical Vapor Deposition (CVD) growth process. |
| | | Type IIA |