

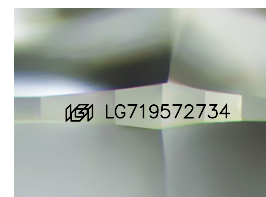
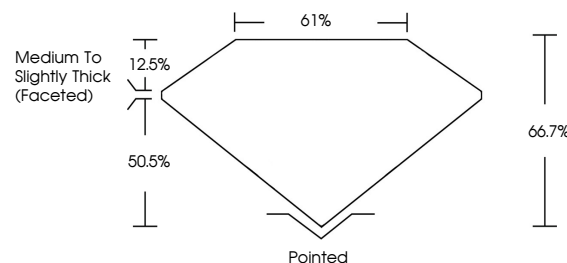


ELECTRONIC COPY

LABORATORY GROWN DIAMOND REPORT

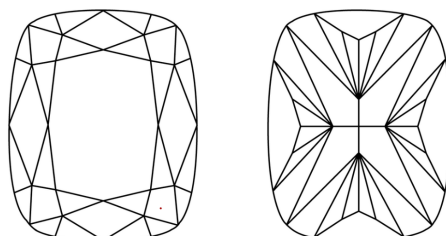
LG719572734
Report verification at igi.org

PROPORTIONS



Sample Image Used

CLARITY CHARACTERISTICS



KEY TO SYMBOLS

Red symbols indicate internal characteristics.
Green symbols indicate external characteristics.

COLOR

D E F G H I J Faint Very Light Light

CLARITY

IF VWS¹⁻² VS¹⁻² SI¹⁻² I¹⁻³

Internally Flawless	Very Very Slightly Included	Very Slightly Included	Slightly Included	Included
------------------------	--------------------------------	---------------------------	----------------------	----------

LABORATORY GROWN DIAMOND REPORT



June 28, 2025

IGI Report Number **LG719572734**Description **LABORATORY GROWN DIAMOND**

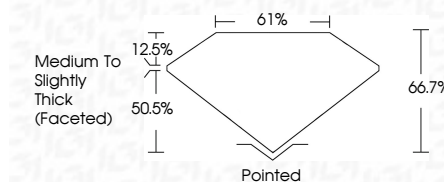
Shape and Cutting Style **CUSHION MODIFIED
BRILLIANT**

Measurements 10.38 X 7.47 X 4.98 MM

GRADING RESULTS

Carat Weight **3.03 CARATS**

Color Grade F

Clarity Grade WS 2

ADDITIONAL GRADING INFORMATION

Polish EXCELLENT

Symmetry **EXCELLENT**Fluorescence **NONE**Inscription(s) LG719572734

Comments: This Laboratory Grown Diamond was created by Chemical Vapor Deposition (CVD) growth process.
Type IIa



© IGI 2020, International Gemological Institute

FD - 10 20



THIS DOCUMENT WAS PRODUCED WITH THE FOLLOWING SECURITY MEASURES: SPECIAL DOCUMENT PAPER, INK SCREENS, WATERMARK, BACKGROUND DESIGNS, HOLOGRAM AND OTHER SECURITY FEATURES NOT LISTED AND DO EXCEED DOCUMENT SECURITY INDUSTRY GUIDELINES

June 26, 2026	3.03 CARATS	Color Grade	Clarity Grade	Depth	Table	Girdle	Medium to Slightly Thick (Faceted)	Polished	EXCELLENT	EXCELLENT	NONE	169116719572734
GI Report No.IG1719572734	Carat Weight											
FUSION MODIFIED BRILLIANT	10.38 X 7.47 X 4.98 MM											

Comments:

The Laboratory Grown Diamond was
 found to be a Type IIa with no
 CVD growth process.