

INTERNATIONAL
GEMOLOGICAL
INSTITUTE

ELECTRONIC COPY

LABORATORY GROWN DIAMOND REPORT

July 4, 2025

IGI Report Number

LG719577613

Description

LABORATORY GROWN DIAMOND

Shape and Cutting Style

PRINCESS CUT

Measurements

7.63 X 7.49 X 5.04 MM

GRADING RESULTS

Carat Weight

2.51 CARATS

Color Grade

D

Clarity Grade

VVS 2

ADDITIONAL GRADING INFORMATION

Polish

EXCELLENT


Symmetry

EXCELLENT

Fluorescence

NONE

Inscription(s)

 LG719577613

Comments: This Laboratory Grown Diamond was created by Chemical Vapor Deposition (CVD) growth process.
Type IIa

LABORATORY GROWN DIAMOND REPORT

July 4, 2025

IGI Report No LG719577613

PRINCESS CUT

7.63 X 7.49 X 5.04 MM

2.51 CARATS

D


VVS 2

D

EXCELLENT

EXCELLENT

NONE

 IGI

Comments: This Laboratory Grown Diamond was created by Chemical Vapor Deposition (CVD) growth process.
Type IIa

LABORATORY GROWN DIAMOND REPORT

July 4, 2025

IGI Report No LG719577613

PRINCESS CUT

7.63 X 7.49 X 5.04 MM

2.51 CARATS

D



VVS 2

D

EXCELLENT

EXCELLENT

NONE

Comments: This Laboratory Grown Diamond was created by Chemical Vapor Deposition (CVD) growth process.
Type IIa

LABORATORY GROWN DIAMOND REPORT

July 4, 2025

IGI Report No LG719577613

PRINCESS CUT

7.63 X 7.49 X 5.04 MM

2.51 CARATS

D


VVS 2

D

EXCELLENT

EXCELLENT

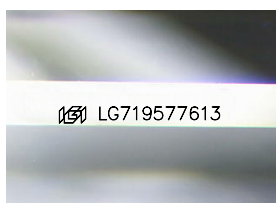
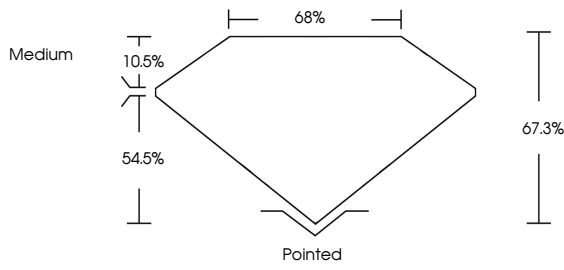
NONE

 IGI

Comments: This Laboratory Grown Diamond was created by Chemical Vapor Deposition (CVD) growth process.
Type IIa

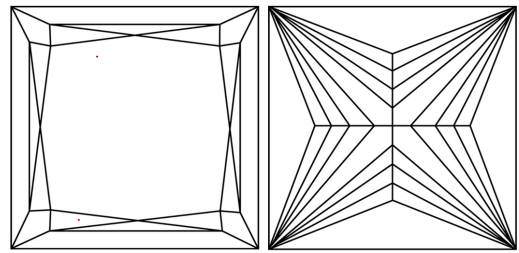
LG719577613
Report verification at [igi.org](https://www.igi.org)

PROPORTIONS



Sample Image Used

CLARITY CHARACTERISTICS



KEY TO SYMBOLS


Red symbols indicate internal characteristics.
Green symbols indicate external characteristics.

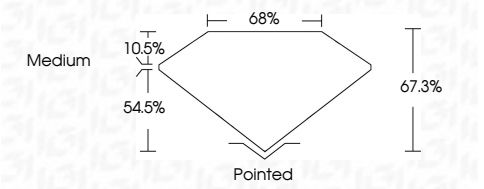
COLOR

D	E	F	G	H	I	J	Faint	Very Light	Light
---	---	---	---	---	---	---	-------	------------	-------

CLARITY

IF	VS ¹⁻²	VS ¹⁻²	SI ¹⁻²	I ¹⁻³
Internally Flawless	Very Very Slightly Included	Very Slightly Included	Slightly Included	Included


July 4, 2025
IGI Report Number LG719577613
Description LABORATORY GROWN DIAMOND
Shape and Cutting Style PRINCESS CUT
Measurements 7.63 X 7.49 X 5.04 MM
GRADING RESULTS
Carat Weight 2.51 CARATS
Color Grade D
Clarity Grade VVS 2



ADDITIONAL GRADING INFORMATION

Polish EXCELLENT
Symmetry EXCELLENT
Fluorescence NONE
Inscription(s)  LG719577613
Comments: This Laboratory Grown Diamond was created by Chemical Vapor Deposition (CVD) growth process.
Type IIa

July 4, 2025

IGI Report No LG719577613

PRINCESS CUT

7.63 X 7.49 X 5.04 MM

2.51 CARATS

D

VVS 2

D

EXCELLENT

EXCELLENT

NONE

 IGI

Comments: This Laboratory Grown Diamond was created by Chemical Vapor Deposition (CVD) growth process.
Type IIa