



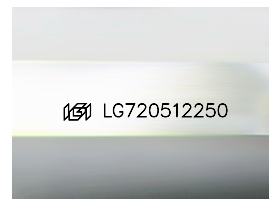
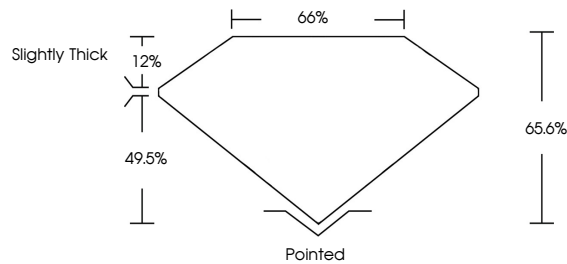
**INTERNATIONAL
GEMOLOGICAL
INSTITUTE**

ELECTRONIC COPY

LABORATORY GROWN DIAMOND REPORT

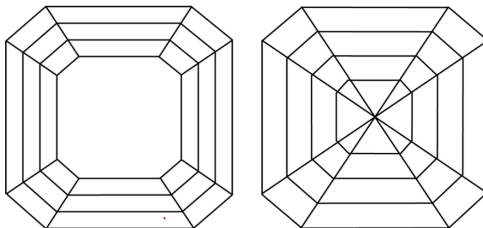
LG720512250
Report verification at igi.org

PROPORTIONS



Sample Image Used

CLARITY CHARACTERISTICS



KEY TO SYMBOLS

Red symbols indicate internal characteristics.
Green symbols indicate external characteristics.

COLOR

D E F G H I J Faint Very Light Light

CLARITY

IF WS¹⁻² VS¹⁻² SI¹⁻² I¹⁻³

Internally Flawless	Very Very Slightly Included	Very Slightly Included	Slightly Included	Included
------------------------	--------------------------------	---------------------------	----------------------	----------



© IGI 2020, International Gemological Institute

FD - 10 20

THIS DOCUMENT WAS PRODUCED WITH THE FOLLOWING SECURITY MEASURES: SPECIAL DOCUMENT PAPER, INK SCREENS, WATERMARK BACKGROUND DESIGNS, HOLOGRAM AND OTHER SECURITY FEATURES NOT LISTED AND DO EXCEED DOCUMENT SECURITY INDUSTRY GUIDELINES.

LABORATORY GROWN DIAMOND REPORT



July 5, 2025

IGI Report Number **LG720512250**

Description	LABORATORY GROWN DIAMOND
-------------	--------------------------

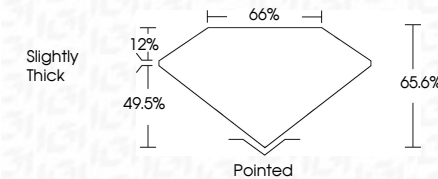
Shape and Cutting Style **SQUARE EMERALD CUT**

Measurements **6.89 X 6.75 X 4.43 MM**

GRADING RESULTS

Carat Weight **1.97 CARAT**

Color Grade **D**

Clarity Grade **VVS 1**

ADDITIONAL GRADING INFORMATION

Polish **EXCELLENT**Symmetry **EXCELLENT**Fluorescence **NONE**Inscription(s) LG72051225

Comments: This Laboratory Grown Diamond was created by Chemical Vapor Deposition (CVD) growth process.
Type IIa



IG

JULY 5, 2025 IGI Report No LG720512590 SQUARE EMERALD CUT	6.89 X 6.75 X 4.43 MM Carat Weight Color Grade Clarity Grade Depth Table Girdle	1.97 CARAT D VS1 66.0% 66% Slightly Thick	Polished EXCELLENT EXCELLENT NONE \$8,167,235/2590	Comments: The Laboratory Grown Diamond was created by Chemical Vapor Deposition (CVD) growth process. Type IIa
-----------------------------------------------------------------	---------------------------------------------------------------------------------------------------	----------------------------------------------------------	----------------------------------------------------------------	----------------------------------------------------------------------------------------------------------------------------

Comments:
This Laboratory Grown Diamond was created by Chemical Vapor Deposition (CVD) growth process.