

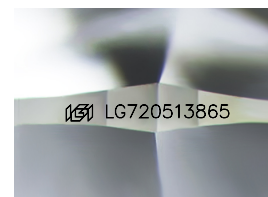
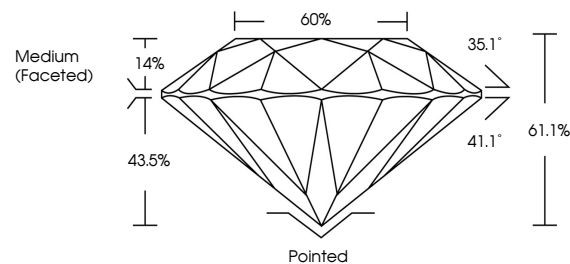


**ELECTRONIC COPY**

## LABORATORY GROWN DIAMOND REPORT

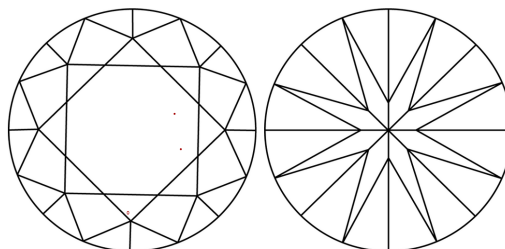
LG720513865  
Report verification at [igi.org](https://igi.org)

## PROPORTIONS



Sample Image Used

## CLARITY CHARACTERISTICS



## KEY TO SYMBOLS

Red symbols indicate internal characteristics.  
Green symbols indicate external characteristics.

## COLOR

D E F G H I J Faint Very Light Light

## CLARITY

IF WS<sup>1-2</sup> VS<sup>1-2</sup> SI<sup>1-2</sup> |<sup>1-3</sup>

Internally Flawless	Very Very Slightly Included	Very Slightly Included	Slightly Included	Included
------------------------	--------------------------------	---------------------------	----------------------	----------

## LABORATORY GROWN DIAMOND REPORT



July 6, 2025

IGI Report Number **LG720513865**Description **LABORATORY GROWN DIAMOND**Shape and Cutting Style **ROUND BRILLIANT**

Measurements 9.35 - 9.39 X 5.72 MM

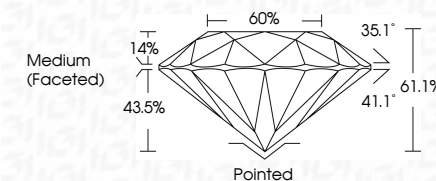
## GRADING RESULTS

Carat Weight **3.09 CARATS**

Color Grade F

Clarity Grade VS 1

Cut Grade **IDEAL**



### ADDITIONAL GRADING INFORMATION

Polish **EXCELLENT**Symmetry **EXCELLENT**Fluorescence **NONE**Inscription(s)  LG720513865

Comments: This Laboratory Grown Diamond was created by Chemical Vapor Deposition (CVD) growth process.  
Type IIa



© IGI 2020, International Gemological Institute

FD - 10 20



THIS DOCUMENT WAS PRODUCED WITH THE FOLLOWING SECURITY MEASURES: SPECIAL DOCUMENT PAPER, INK SCREENS, WATERMARK, BACKGROUND DESIGNS, HOLOGRAM AND OTHER SECURITY FEATURES NOT LISTED AND DO EXCEED DOCUMENT SECURITY INDUSTRY GUIDELINES

**www.igi.org**

<b>G Report No.</b>	<b>LG720513865</b>
<b>ROUND BRILLANT</b>	
<b>Weight</b>	<b>3.99 CARATS</b>
<b>Color Grade</b>	<b>F</b>
<b>Clarity Grade</b>	<b>VS1</b>
<b>Cut Grade</b>	<b>IDEAL</b>
<b>Depth</b>	<b>61.1%</b>
<b>Table</b>	<b>60%</b>
<b>Girdle</b>	<b>Medium (Faceted)</b>
<b>Culet</b>	<b>Poited</b>
<b>Polish</b>	<b>EXCELLENT</b>
<b>Symmetry</b>	<b>EXCELLENT</b>
<b>Fluorescence</b>	<b>NONE</b>
<b>Inscriptions(s)</b>	<b>1691 LG720513865</b>

**Comments:**  
 Natural Color Grown Diamond was  
 treated by Chemical Vapor Deposition  
 CVD growth process.  
 type IIa