

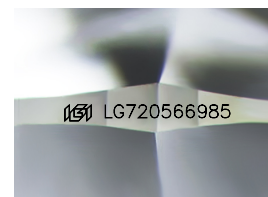
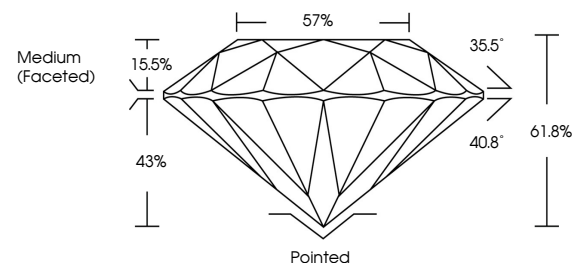


ELECTRONIC COPY

LABORATORY GROWN DIAMOND REPORT

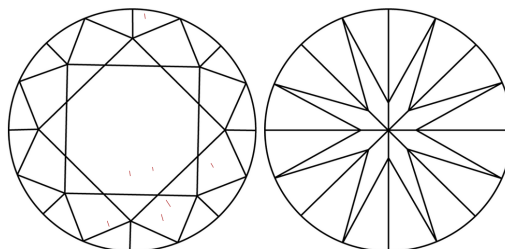
LG720566985
Report verification at igi.org

PROPORTIONS



Sample Image Used

CLARITY CHARACTERISTICS



KEY TO SYMBOLS

Red symbols indicate internal characteristics.
Green symbols indicate external characteristics.

COLOR

D E F G H I J Faint Very Light Light

CLARITY

IF WS¹⁻² VS¹⁻² SI¹⁻² |¹⁻³

Internally Flawless	Very Very Slightly Included	Very Slightly Included	Slightly Included	Included
------------------------	--------------------------------	---------------------------	----------------------	----------



© IGI 2020, International Gemological Institute

FD - 10 20

www.igi.org

LABORATORY GROWN DIAMOND REPORT



July 6, 2025

IGI Report Number **LG720566985**

Description **LABORATORY GROWN DIAMOND**Shape and Cutting Style **ROUND BRILLIANT**

Measurements	6.43 - 6.51 X 3.99 MM
--------------	-----------------------

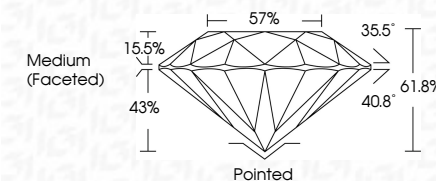
GRADING RESULTS

Carat Weight 1.01 CARAT

Color Grade D

Clarity Grade VVS 2

Cut Grade **IDEAL**



ADDITIONAL GRADING INFORMATION

Polish **EXCELLENT**Symmetry **EXCELLENT**Fluorescence **NONE**Inscription(s) LG720566985

Comments: As Grown - No indication of post-growth treatment.

This Laboratory Grown Diamond was created by High Pressure High Temperature (HPHT) growth process.



<p> 101 CARAT VVS 2 IDEAL 61.5% 57% Medium (face-set) </p>	<p> Printed EXCELLENT EXCELLENT NONE #81 LG72056995 </p>	<p> Comments: No indication of post-growth is shown. This Laboratory Grown Diamond was created by High Pressure High temperature (HPHT) growth process. Type IIa </p>
---	---	--