

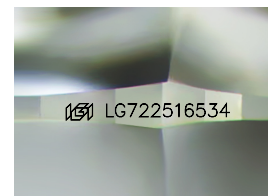
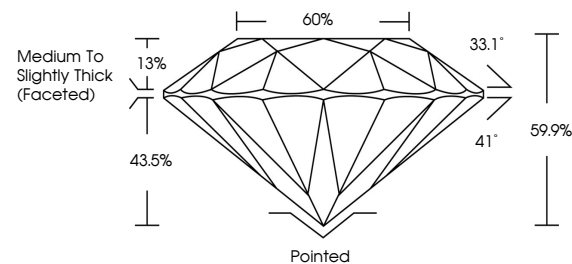


**ELECTRONIC COPY**

## LABORATORY GROWN DIAMOND REPORT

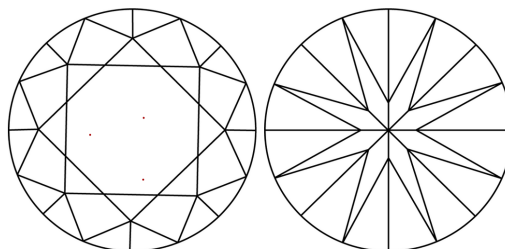
LG722516534  
Report verification at [igi.org](https://igi.org)

## PROPORTIONS



Sample Image Used

## CLARITY CHARACTERISTICS



## KEY TO SYMBOLS

Red symbols indicate internal characteristics.  
Green symbols indicate external characteristics.

**COLOR**

D E F G H I J Faint Very Light Light

## CLARITY

IF WS<sup>1-2</sup> VS<sup>1-2</sup> SI<sup>1-2</sup> |<sup>1-3</sup>

Internally Flawless	Very Very Slightly Included	Very Slightly Included	Slightly Included	Included
------------------------	--------------------------------	---------------------------	----------------------	----------



July 10, 2025

IGI Report Number **LG722516534**Description **LABORATORY GROWN DIAMOND**Shape and Cutting Style **ROUND BRILLIANT**

Measurements 9.34 - 9.40 X 5.62 MM

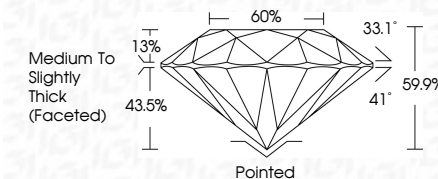
## GRADING RESULTS

Carat Weight **3.01 CARATS**

Color Grade E

Clarity Grade **VVS 2**

Cut Grade **IDEAL**



### ADDITIONAL GRADING INFORMATION

Polish EXCELLENT

Symmetry **EXCELLENT**Fluorescence **NONE**Inscription(s)  LG722516534

Comments: This Laboratory Grown Diamond was created by Chemical Vapor Deposition (CVD) growth process.  
Type IIa



© IGI 2020, International Gemological Institute

FD - 10 20

**www.igi.org**

THIS DOCUMENT WAS PRODUCED WITH THE FOLLOWING SECURITY MEASURES: SPECIAL DOCUMENT PAPER, INK SCREENS, WATERMARK BACKGROUND DESIGNS, HOLOGRAM AND OTHER SECURITY FEATURES NOT LISTED AND DO EXCEED DOCUMENT SECURITY INDUSTRY GUIDELINES

July 10, 2025  
GI Report No LG722516534  
ROUND BRILLIANT

<b>GI Report No 16722516584</b>	<b>3.01 CARATS</b>	<b>VVS 2</b>	<b>IDEAL</b>	<b>69%</b>	<b>60%</b>	<b>Medium to Slightly Thick (Fasted)</b>	<b>Paired</b>	<b>EXCELLENT</b>	<b>NONE</b>
<b>ROUND - 9.40 X 5.02 MM</b>	<b>Color Grade</b>	<b>Clarity Grade</b>	<b>Cut Grade</b>	<b>Depth</b>	<b>Table</b>	<b>Girdle</b>	<b>Culet</b>	<b>Polish</b>	<b>Symmetry</b>
<b>Very Good Brilliant</b>	<b>Corat Weight</b>	<b>E</b>	<b>IDEAL</b>	<b>69%</b>	<b>60%</b>	<b>Medium to Slightly Thick (Fasted)</b>	<b>Paired</b>	<b>EXCELLENT</b>	<b>NONE</b>
<b>FLUORESCENCE</b>	<b>Fluorescence</b>								

**Comments:**  
This Laboratory Grown Diamond was  
created by Chemical Vapor Deposition  
(CVD) growth process.