

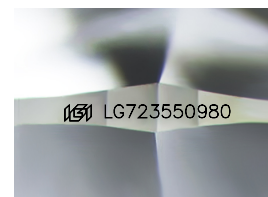
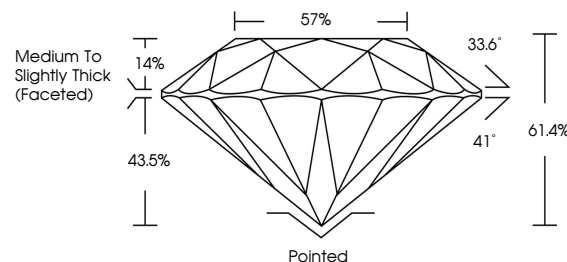


**ELECTRONIC COPY**

## LABORATORY GROWN DIAMOND REPORT

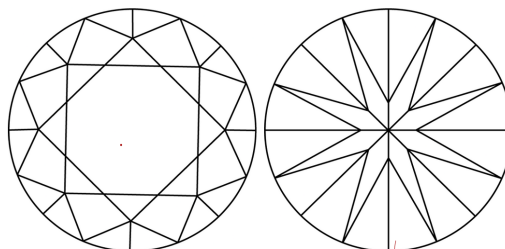
LG723550980  
Report verification at [lgi.org](https://lgi.org)

## PROPORTIONS



Sample Image Used

## CLARITY CHARACTERISTICS



### KEY TO SYMBOLS

Red symbols indicate internal characteristics.  
Green symbols indicate external characteristics.

## COLOR

D E F G H I J Faint Very Light Light

## CLARITY

IF WS<sup>1-2</sup> VS<sup>1-2</sup> SI<sup>1-2</sup> |<sup>1-3</sup>

Internally Flawless	Very Very Slightly Included	Very Slightly Included	Slightly Included	Included
------------------------	--------------------------------	---------------------------	----------------------	----------



July 19, 2025

IGI Report Number **LG723550980**Description **LABORATORY GROWN DIAMOND**Shape and Cutting Style **ROUND BRILLIANT**

Measurements 6.42 - 6.46 X 3.96 MM

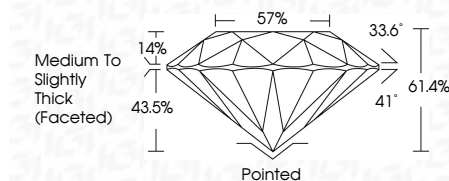
## GRADING RESULTS

Carat Weight **1.01 CARAT**

Color Grade	D
-------------	---

Clarity Grade **VVS 2**

Cut Grade **IDEAL**



### ADDITIONAL GRADING INFORMATION

Polish EXCELLENT

Symmetry **EXCELLENT**Fluorescence **NONE**Inscription(s)  LG723550980

Comments: As Grown - No indication of post-growth treatment.

This Laboratory Grown Diamond was created by High Pressure High Temperature (HPHT) growth process.

Type II



© IGI 2020, International Gemological Institute

FD - 10 20

**www.igi.org**



THIS DOCUMENT WAS PRODUCED WITH THE FOLLOWING SECURITY MEASURES: SPECIAL DOCUMENT PAPER, INK SCREENS, WATERMARK, BACKGROUND DESIGNS, HOLOGRAM AND OTHER SECURITY FEATURES NOT LISTED AND DO EXCEED DOCUMENT SECURITY INDUSTRY GUIDELINE

<b>July 19, 2025</b>	<b>GJ Report No L6723505980</b>					
<b>ROUND BRILLIANT</b>						
<b>6.02 - 6.46 X 3.95 MM</b>	<b>Color Weight</b>	<b>Carat Weight</b>	<b>D</b>	<b>VVS 2</b>	<b>1.01 CARAT</b>	
	<b>Color Grade</b>			<b>IDEAL</b>		
	<b>Clarity Grade</b>			<b>61.6%</b>		
	<b>Cut Grade</b>			<b>57%</b>		
	<b>Depth</b>			<b>Medium to Slightly Thick Faceted</b>		
	<b>Table</b>					
	<b>Grades</b>					
	<b>Culet</b>			<b>Poished</b>		
	<b>Polish</b>			<b>EXCELLENT</b>		
	<b>Symmetry</b>			<b>EXCELLENT</b>		
	<b>Fluorescence</b>			<b>NONE</b>		
	<b>Inscriptions(s)</b>					
						<b>(65) L6723505980</b>

Comments:  
As Grown - No indication of post-growth treatment.  
This Laboratory Grown Diamond was created by High Pressure High Temperature (HPHT) growth process.