



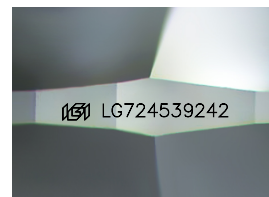
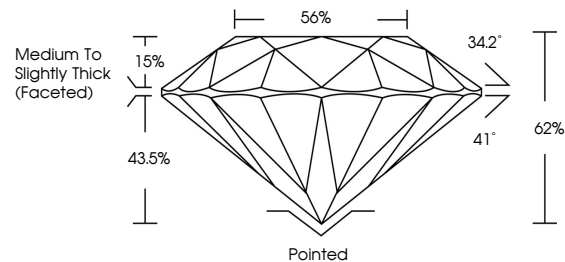
**INTERNATIONAL  
GEMOLOGICAL  
INSTITUTE**

**ELECTRONIC COPY**

## LABORATORY GROWN DIAMOND REPORT

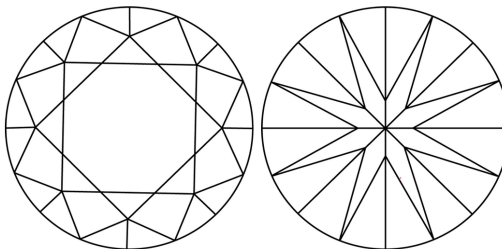
LG724539242  
Report verification at lgi.org

## PROPORTIONS



Sample Image Used

## CLARITY CHARACTERISTICS



### KEY TO SYMBOLS

Red symbols indicate internal characteristics.  
Green symbols indicate external characteristics.

## COLOR

D E F G H I J Faint Very Light Light

## CLARITY

IF	WS <sup>1-2</sup>	VS <sup>1-2</sup>	SI <sup>1-2</sup>	1
----	-------------------	-------------------	-------------------	---

Internally Flawless	Very Very Slightly Included	Very Slightly Included	Slightly Included	Included
------------------------	--------------------------------	---------------------------	----------------------	----------



© IGI 2020, International Gemological Institute

FD - 10 20

**www.igi.org**

THIS DOCUMENT WAS PRODUCED WITH THE FOLLOWING SECURITY MEASURES: SPECIAL DOCUMENT PAPER, INK SCREENS, WATERMARK, BACKGROUND DESIGNS, HOLOGRAM AND OTHER SECURITY FEATURES NOT LISTED AND DO EXCEED DOCUMENT SECURITY INDUSTRY GUIDELINES

## LABORATORY GROWN DIAMOND REPORT



July 26, 2025

IGI Report Number **LG724539242**

Description	LABORATORY GROWN DIAMOND
-------------	--------------------------

Shape and Cutting Style **ROUND BRILLIANT**

Measurements 6.50 - 6.54 X 4.04 MM

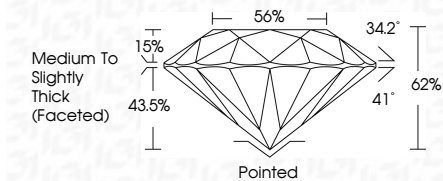
## GRADING RESULTS

Carat Weight 1.05 CARAT

Color Grade	D
-------------	---

Clarity Grade **VVS 2**

Cut Grade **IDEAL**



### ADDITIONAL GRADING INFORMATION

Polish **EXCELLENCE**Symmetry **EXCELLENCE**

Fluorescence NONI

Inscription(s)  LG72453924

Comments: As Grown - No indication of post-growth treatment.

This Laboratory Grown Diamond was created by High Pressure High Temperature (HPHT) growth process.

Type II



IG

July 26, 2025	IGI Report No. LG774639242		ROUND BRILLIANT		4.50 - 4.54 X 4.04 MM		1.05 CARAT		D		VS 2		IDEAL		62%		66%		Medium to Slightly Thick (forecast)		Polished		EXCELLENT		EXCELLENT		NONE		IGI LG774639242	
Color	Weight	Grade	Clarity	Grade	Cut	Grade	Depth	Table	Grade	Culet	Polish	Symmetry	Fluorescence	Inclusions(s)	Comments:															
As Grown - No indication of post-growth treatment.																														
This Laboratory Grown Diamond was synthesized by a high temperature, high pressure process.																														
Type II																														