

INTERNATIONAL  
GEMOLOGICAL  
INSTITUTE

ELECTRONIC COPY

LABORATORY GROWN DIAMOND REPORT

July 26, 2025

IGI Report Number

DESCRIPTION

Shape and Cutting Style

Measurements

LG724539360

LABORATORY GROWN DIAMOND

ROUND BRILLIANT

7.65 - 7.67 X 4.70 MM

GRADING RESULTS

Carat Weight

Color Grade

Clarity Grade

Cut Grade

1.71 CARAT

F

VS 1

IDEAL

ADDITIONAL GRADING INFORMATION

Polish

Symmetry

Fluorescence

Inscription(s)

EXCELLENT

EXCELLENT

NONE

IGI LG724539360

Comments: This Laboratory Grown Diamond was created by Chemical Vapor Deposition (CVD) growth process. Type IIa

LABORATORY GROWN DIAMOND REPORT

July 26, 2025

IGI Report Number

DESCRIPTION

Shape and Cutting Style

Measurements

GRADING RESULTS

Carat Weight

Color Grade

Clarity Grade

Cut Grade

ADDITIONAL GRADING INFORMATION

Polish

Symmetry

Fluorescence

Inscription(s)

Comments: This Laboratory Grown Diamond was created by Chemical Vapor Deposition (CVD) growth process. Type IIa

LABORATORY GROWN DIAMOND REPORT

July 26, 2025

IGI Report No LG724539360

ROUND BRILLIANT

7.65 - 7.67 X 4.70 MM

1.71 CARAT

F

VS 1

IDEAL

61.4%

88%

Medium (Faceted)

Pointed

EXCELLENT

EXCELLENT

NONE

IGI LG724539360

Comments: The Laboratory Grown Diamond was created by Chemical Vapor Deposition (CVD) growth process. Type IIa

LABORATORY GROWN DIAMOND REPORT

July 26, 2025

IGI Report No LG724539360

ROUND BRILLIANT

7.65 - 7.67 X 4.70 MM

1.71 CARAT

F

VS 1

IDEAL

61.4%

88%

Medium (Faceted)

Pointed

EXCELLENT

EXCELLENT

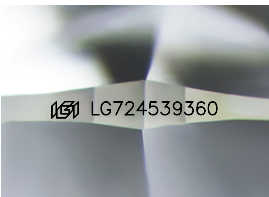
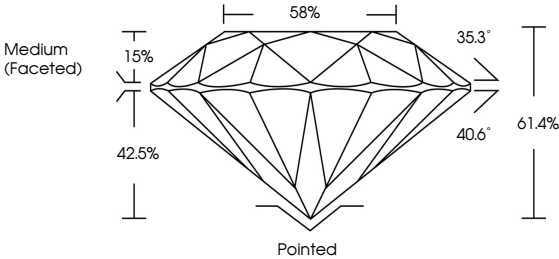
NONE

IGI LG724539360

Comments: The Laboratory Grown Diamond was created by Chemical Vapor Deposition (CVD) growth process. Type IIa

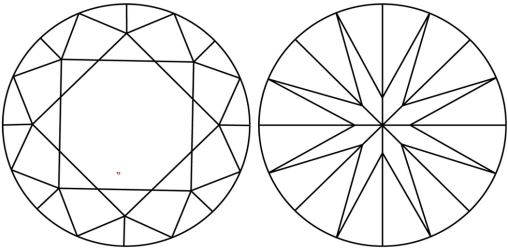
LG724539360  
Report verification at [igi.org](https://www.igi.org)

PROPORTIONS



Sample Image Used

CLARITY CHARACTERISTICS



KEY TO SYMBOLS

Red symbols indicate internal characteristics.  
Green symbols indicate external characteristics.

COLOR

D	E	F	G	H	I	J	Faint	Very Light	Light
---	---	---	---	---	---	---	-------	------------	-------

CLARITY

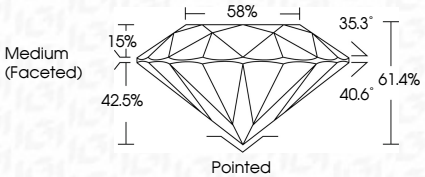
IF	VS <sup>1-2</sup>	VS <sup>1-2</sup>	SI <sup>1-2</sup>	I <sup>1-3</sup>
Internally Flawless	Very Very Slightly Included	Very Slightly Included	Slightly Included	Included

LABORATORY GROWN DIAMOND REPORT



July 26, 2025  
IGI Report Number  
Description  
Shape and Cutting Style  
Measurements  
GRADING RESULTS  
Carat Weight  
Color Grade  
Clarity Grade  
Cut Grade

LG724539360  
LABORATORY GROWN DIAMOND  
ROUND BRILLIANT  
7.65 - 7.67 X 4.70 MM  
1.71 CARAT  
F  
VS 1  
IDEAL



ADDITIONAL GRADING INFORMATION

Polish  
Symmetry  
Fluorescence  
Inscription(s)  
Comments: This Laboratory Grown Diamond was created by Chemical Vapor Deposition (CVD) growth process. Type IIa

EXCELLENT  
EXCELLENT  
NONE  
IGI LG724539360



July 26, 2025

IGI Report No LG724539360

ROUND BRILLIANT

7.65 - 7.67 X 4.70 MM

1.71 CARAT

F

VS 1

IDEAL

61.4%

88%

Medium (Faceted)

Pointed

EXCELLENT

EXCELLENT

NONE

IGI LG724539360

Comments: The Laboratory Grown Diamond was created by Chemical Vapor Deposition (CVD) growth process. Type IIa