

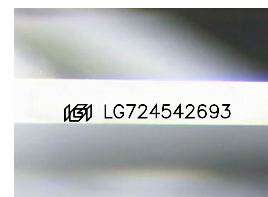
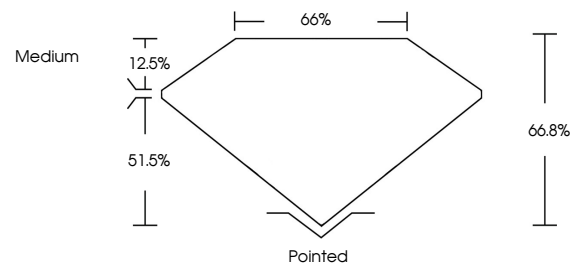


ELECTRONIC COPY

LABORATORY GROWN DIAMOND REPORT

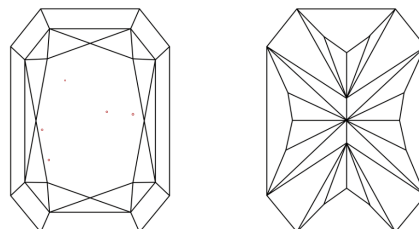
LG724542693
Report verification at igi.org

PROPORTIONS



Sample Image Used

CLARITY CHARACTERISTICS



KEY TO SYMBOLS

Red symbols indicate internal characteristics.
Green symbols indicate external characteristics.

COLOR

D E F G H I J Faint Very Light Light

CLARITY

| IF | VS ¹⁻² | VS ¹⁻² | SI ¹⁻² | I ¹⁻³ |
|---------------------|-----------------------------|------------------------|-------------------|------------------|
| Internally Flawless | Very Very Slightly Included | Very Slightly Included | Slightly Included | Included |

LABORATORY GROWN DIAMOND REPORT



July 24, 2025

IGI Report Number **LG724542693**Description **LABORATORY GROWN DIAMOND**

Shape and Cutting Style

CUT CORNERED
RECTANGULAR MODIFIED
BRILLIANT

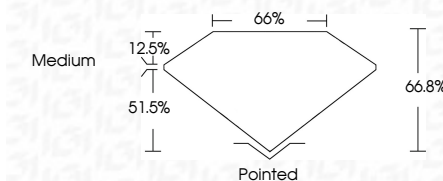
Measurements 10.74 X 7.45 X 4.98 MM

GRADING RESULTS

Carat Weight **3.42 CARATS**

Color Grade **E**

Clarity Grade VS 1



ADDITIONAL GRADING INFORMATION

Polish **EXCELLENT**Symmetry **EXCELLENT**Fluorescence **NONE**Inscription(s) LG724542693

Comments: This Laboratory Grown Diamond was created by Chemical Vapor Deposition (CVD) growth process.
Type IIa



© IGI 2020, International Gemological Institute

FD - 10 20

www.igi.org

THIS DOCUMENT WAS PRODUCED WITH THE FOLLOWING SECURITY MEASURES: SPECIAL DOCUMENT PAPER, INK SCREENS, WATERMARK BACKGROUND DESIGNS, HOLOGRAM AND OTHER SECURITY FEATURES NOT LISTED AND DO EXCEED DOCUMENT SECURITY INDUSTRY GUIDELINES

| | | | |
|--------------------------------------|--------------------------|---------------|------------------|
| July 24, 2025 | CU Report No LG7745-0263 | 3.42 CARATS | E |
| GI CORNERED RECT. MODIFIED BRILLIANT | | | |
| ID:74.7 X 46 X 4.98 MM | | | |
| Carat Weight | Color Grade | Clarity Grade | Depth |
| | | | table |
| | | | Grade |
| | | | Medium |
| Culet | Polish | Symmetry | Fluorescence |
| | | | inscriptions(s) |
| Pointed | EXCELLENT | EXCELLENT | NONE |
| | | | 1691 LG7745-0263 |

Comments:
The Laboratory Grown Diamond was
grown by the Chemical Vapor Deposition
(CVD) growth process.
type IIG