

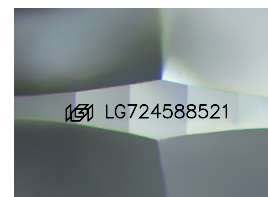
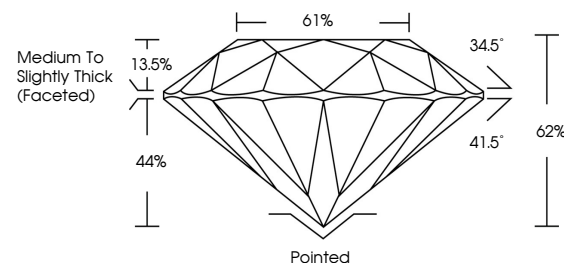


**ELECTRONIC COPY**

## LABORATORY GROWN DIAMOND REPORT

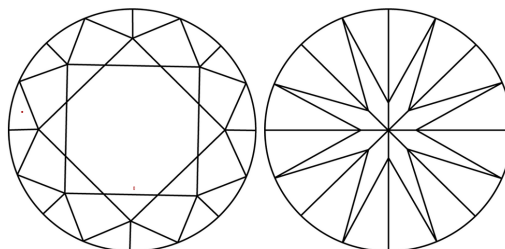
LG724588521  
Report verification at [iqi.org](https://iqi.org)

## PROPORTIONS



Sample Image Used

## CLARITY CHARACTERISTICS



## KEY TO SYMBOLS

Red symbols indicate internal characteristics.  
Green symbols indicate external characteristics.

## COLOR

D E F G H I J Faint Very Light Light

## CLARITY

IF WS<sup>1-2</sup> VS<sup>1-2</sup> SI<sup>1-2</sup> |<sup>1-3</sup>

Internally Flawless	Very Very Slightly Included	Very Slightly Included	Slightly Included	Included
------------------------	--------------------------------	---------------------------	----------------------	----------

## LABORATORY GROWN DIAMOND REPORT



August 5, 2025

IGI Report Number **LG724588521**Description **LABORATORY GROWN DIAMOND**Shape and Cutting Style **ROUND BRILLIANT**

Measurements 9.15 - 9.21 X 5.70 MM

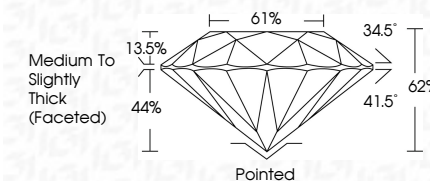
## GRADING RESULTS

Carat Weight **3.00 CARATS**

Color Grade

Clarity Grade WS 2

Cut Grade **EXCELLENT**



### ADDITIONAL GRADING INFORMATION

Polish EXCELLENT

Symmetry **EXCELLENT**Fluorescence **NONE**Inscription(s)  LG724588521

Comments: This Laboratory Grown Diamond was created by Chemical Vapor Deposition (CVD) growth process.  
Type IIa



© IGI 2020, International Gemological Institute

FD - 10 20

**www.igi.org**



THIS DOCUMENT WAS PRODUCED WITH THE FOLLOWING SECURITY MEASURES: SPECIAL DOCUMENT PAPER, INK SCREENS, WATERMARK, BACKGROUND DESIGNS, HOLOGRAM AND OTHER SECURITY FEATURES NOT LISTED AND DO EXCEED DOCUMENT SECURITY INDUSTRY GUIDELINE

<b>August 5, 2025</b>		<b>GI Report No G7768921</b>				
<b>ROUND BRILLIANT</b>		<b>3.00 CARATS</b>				
<b>15 - 15 x .421 X 5.70 MM</b>		<b>F</b>				
Carat Weight	Color Grade	Clarity Grade	Depth			
			VVS 2			
			EXCELLENT			
			62%			
			61%			
			Medium to Slightly Thick (Forecast)			
Culet	Poished					
Polish	EXCELLENT					
Symmetry	EXCELLENT					
Fluorescence	NONE					
Inscriptions(s)	lg6   G7768921					
<b>Comments:</b>						
The laboratory Crown Diamond was used for this report.						
CVD growth process.						
Type Iia						