



**ELECTRONIC COPY**

## LABORATORY GROWN DIAMOND REPORT

August 5, 2025	
IGI Report Number	LG725506691
Description	LABORATORY GROWN DIAMOND
Shape and Cutting Style	ROUND BRILLIANT
Measurements	8.80 - 8.85 X 5.38 MM

## GRADING RESULTS

Carat Weight	2.59 CARATS
Color Grade	F
Clarity Grade	VS 1
Cut Grade	IDEAL

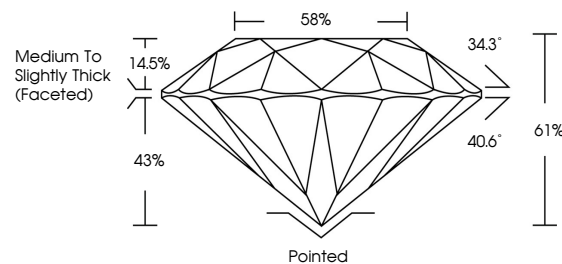
### ADDITIONAL GRADING INFORMATION

Polish	EXCELLENT
Symmetry	EXCELLENT
Fluorescence	NONE
Inscription(s)	 LG725506691

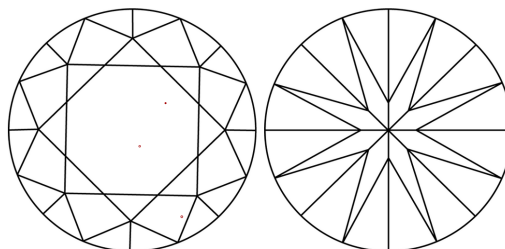
Comments: This Laboratory Grown Diamond was created by Chemical Vapor Deposition (CVD) growth process.  
Type IIa

LG725506691  
Report verification at [igi.org](https://igi.org)

## PROPORTIONS

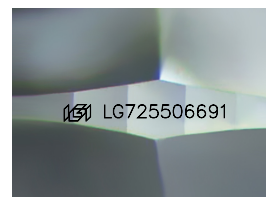


## CLARITY CHARACTERISTICS



## KEY TO SYMBOLS

Red symbols indicate internal characteristics.  
Green symbols indicate external characteristics.



Sample Image Used

## COLOR

D E F G H I J Faint Very Light Light

## CLARITY

IF WS<sup>1-2</sup> VS<sup>1-2</sup> SI<sup>1-2</sup> |<sup>1-3</sup>

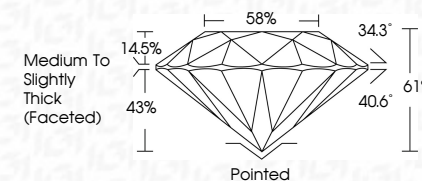
Internally Flawless	Very Very Slightly Included	Very Slightly Included	Slightly Included	Included
------------------------	--------------------------------	---------------------------	----------------------	----------



August 5, 2025	
IGI Report Number	LG725506691
Description	LABORATORY GROWN DIAMOND
Shape and Cutting Style	ROUND BRILLIANT
Measurements	8.80 - 8.85 X 5.38 MM

## GRADING RESULTS

Carat Weight	2.59 CARATS
Color Grade	F
Clarity Grade	VS 1
Cut Grade	IDEAL



### ADDITIONAL GRADING INFORMATION

Polish	EXCELLENT
Symmetry	EXCELLENT
Fluorescence	NONE
Inscription(s)	 LG725506691
<p>Comments: This Laboratory Grown Diamond was created by Chemical Vapor Deposition (CVD) growth process.</p> <p>Type IIa</p>	



IG



© IGI 2020, International Gemological Institute

FD - 10 20

**www.igi.org**



THIS DOCUMENT WAS PRODUCED WITH THE FOLLOWING SECURITY MEASURES: SPECIAL DOCUMENT PAPER, INK SCREENS, WATERMARK, BACKGROUND DESIGNS, HOLOGRAM AND OTHER SECURITY FEATURES NOT LISTED AND DO EXCEED DOCUMENT SECURITY INDUSTRY GUIDELINES

<b>August 5, 2026</b>	<b>G Report No LG72506691</b>	<b>2.89 CARATS</b>	<b>F</b>	<b>VSI</b>	<b>IDEAL</b>	<b>61%</b>	<b>59%</b>	<b>Medium to slightly Thick Faceted</b>	<b>Poished</b>	<b>B'CELLENT</b>	<b>B'CELLENT</b>	<b>NONE</b>	<b>#GJ LG72506691</b>
<b>ROUND BRILLIANT</b>	<b>Color Grade</b>	<b>Clarity Grade</b>	<b>Cut Grade</b>	<b>Depth</b>	<b>Table</b>	<b>Girdle</b>	<b>Symmetry</b>	<b>Fluorescence</b>	<b>Inscriptions(s)</b>	<b>Comments:</b>	<b>The Laboratory Grown Diamond was Vapor Deposition CVD growth process.</b>		
<b>GI REPORT NO LG72506691</b>	<b>Carat Weight</b>	<b>2.89 - 0.85 X 5.38 MM</b>	<b>Color Grade</b>	<b>Clarity Grade</b>	<b>Cut Grade</b>	<b>Depth</b>	<b>Table</b>	<b>Girdle</b>	<b>Symmetry</b>	<b>Fluorescence</b>	<b>Inscriptions(s)</b>	<b>Type IIG</b>	