



**ELECTRONIC COPY**

## LABORATORY GROWN DIAMOND REPORT

August 2, 2025	
IGI Report Number	LG726523764
Description	LABORATORY GROWN DIAMOND
Shape and Cutting Style	ROUND BRILLIANT
Measurements	9.22 - 9.27 X 5.71 MM

## GRADING RESULTS

Carat Weight	3.00 CARATS
Color Grade	E
Clarity Grade	VVS 2
Cut Grade	IDEAL

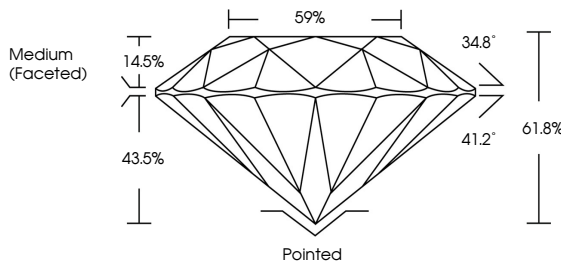
### ADDITIONAL GRADING INFORMATION

Polish	EXCELLENT
Symmetry	EXCELLENT
Fluorescence	NONE
Inscription(s)	 LG726523764

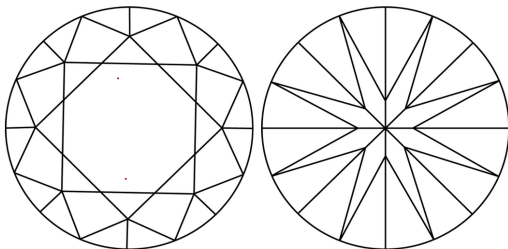
Comments: This Laboratory Grown Diamond was created by Chemical Vapor Deposition (CVD) growth process.  
Type IIa

LG726523764  
Report verification at [igi.org](https://igi.org)

## PROPORTIONS

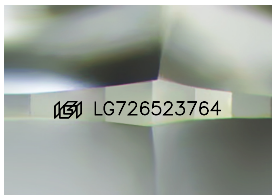


## CLARITY CHARACTERISTICS



## KEY TO SYMBOLS

Red symbols indicate internal characteristics.  
Green symbols indicate external characteristics.



Sample Image Used

## COLOR

D E F G H I J Faint Very Light Light

## CLARITY

IF WS<sup>1-2</sup> VS<sup>1-2</sup> SI<sup>1-2</sup> |<sup>1-3</sup>

Internally Flawless	Very Very Slightly Included	Very Slightly Included	Slightly Included	Included
------------------------	--------------------------------	---------------------------	----------------------	----------

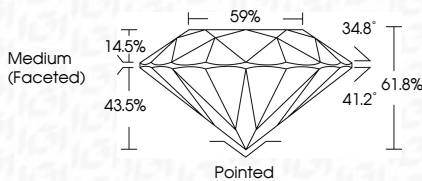
## LABORATORY GROWN DIAMOND REPORT



August 2, 2025	
IGI Report Number	LG726523764
Description	LABORATORY GROWN DIAMOND
Shape and Cutting Style	ROUND BRILLIANT
Measurements	9.22 - 9.27 X 5.71 MM

## GRADING RESULTS

Carat Weight	3.00 CARATS
Color Grade	E
Clarity Grade	VVS 2
Cut Grade	IDEAL



### ADDITIONAL GRADING INFORMATION

Polish	EXCELLENT
Symmetry	EXCELLENT
Fluorescence	NONE
Inscription(s)	 LGG 762523764
Comments: This Laboratory Grown Diamond was created by Chemical Vapor Deposition (CVD) growth process.	
Type IIa	



# IGI



© IGI 2020, International Gemological Institute

FD - 10 20



THIS DOCUMENT WAS PRODUCED WITH THE FOLLOWING SECURITY MEASURES: SPECIAL DOCUMENT PAPER, INK SCREENS, WATERMARK, BACKGROUND DESIGNS, HOLOGRAM AND OTHER SECURITY FEATURES NOT LISTED AND DO EXCEED DOCUMENT SECURITY INDUSTRY GUIDELINES

**www.igi.org**



# IGI

<b>ROUND BRILLIANT</b>	<b>9.92 - 9.27 X 5.71 MM</b>	<b>3.00 CARATS</b>
<b>Color</b> Grade	<b>Clarity</b> Grade	<b>Cut</b> Grade
E	VVS-2	IDEAL
	61.8%	59%
		<b>Medium (Faceted)</b>
		<b>Polished</b>
		<b>EXCELLENT</b>
		<b>EXCELLENT</b>
		<b>NONE</b>
		<b>(#) G974623764</b>

**Comments:**  
This Laboratory Grown Diamond was created by Chemical Vapor Deposition (CVD) growth process.  
Type IIa