

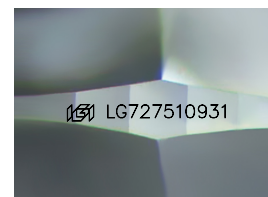
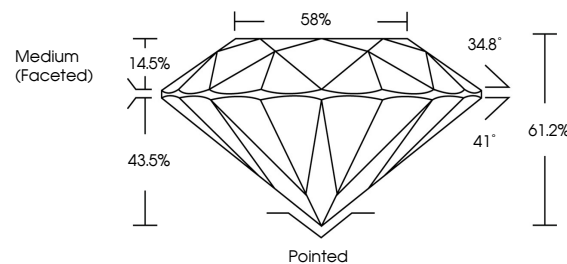


ELECTRONIC COPY

LABORATORY GROWN DIAMOND REPORT

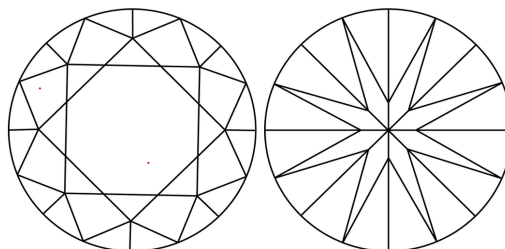
LG727510931
Report verification at lgi.org

PROPORTIONS



Sample Image Used

CLARITY CHARACTERISTICS



KEY TO SYMBOLS

Red symbols indicate internal characteristics.
Green symbols indicate external characteristics.

COLOR

D E F G H I J Faint Very Light Light

CLARITY

IF WS¹⁻² VS¹⁻² SI¹⁻² |¹⁻³

Internally Flawless	Very Very Slightly Included	Very Slightly Included	Slightly Included	Included
------------------------	--------------------------------	---------------------------	----------------------	----------

LABORATORY GROWN DIAMOND REPORT



August 8, 2025

IGI Report Number **LG727510931**Description **LABORATORY GROWN DIAMOND**Shape and Cutting Style **ROUND BRILLIANT**

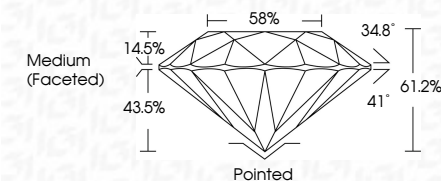
Measurements 9.37 - 9.40 X 5.75 MM

GRADING RESULTS

Carat Weight **3.09 CARATS**

Color Grade **E**Clarity Grade **VVS 1**

Cut Grade **IDEAL**



ADDITIONAL GRADING INFORMATION

Polish **EXCELLENT**Symmetry **EXCELLENT**Fluorescence **NONE**Inscription(s)  LG727510931

Comments: This Laboratory Grown Diamond was created by Chemical Vapor Deposition (CVD) growth process.
Type IIa



© IGI 2020, International Gemological Institute

FD - 10 20

www.igi.org



THIS DOCUMENT WAS PRODUCED WITH THE FOLLOWING SECURITY MEASURES: SPECIAL DOCUMENT PAPER, INK SCREENS, WATERMARK, BACKGROUND DESIGNS, HOLOGRAM AND OTHER SECURITY FEATURES NOT LISTED AND DO EXCEED DOCUMENT SECURITY INDUSTRY GUIDELINES

August 8, 2025		G1 Report No.1672751D931	
ROUND BRILLIANT			
3.37 - 3.40 X 5.75 MM			
Carat Weight	3.09 CARATS	Color Grade	E
Clarity Grade	VS1	Cut Grade	IDEAL
Depth	61.2%	Table	58%
Girdle	Medium (Faceted)	Fluorescence	None
Culet	Pointed	Symmetry	EXCELLENT
Polish	EXCELLENT	Inscriptions(s)	1691672751D931
Comments:		The Laboratory has analyzed the diamond and has determined that the diamond is a natural diamond.	
Type IIG		The diamond is a natural diamond.	