

INTERNATIONAL  
GEMOLOGICAL  
INSTITUTE

ELECTRONIC COPY

LABORATORY GROWN DIAMOND REPORT

August 7, 2025

IGI Report Number

LG727532032

Description

LABORATORY GROWN DIAMOND

Shape and Cutting Style

CUT CORNERED RECTANGULAR  
MODIFIED BRILLIANT

Measurements

10.06 X 7.13 X 4.80 MM

GRADING RESULTS

Carat Weight

3.00 CARATS

Color Grade

D

Clarity Grade

VS 2

ADDITIONAL GRADING INFORMATION

Polish

EXCELLENT


Symmetry

EXCELLENT

Fluorescence

NONE

Inscription(s)

 LG727532032

Comments: This Laboratory Grown Diamond was created by Chemical Vapor Deposition (CVD) growth process.  
Type IIa

LABORATORY GROWN DIAMOND REPORT

August 7, 2025

IGI Report Number

LG727532032

Description

LABORATORY GROWN DIAMOND

Shape and Cutting Style

CUT CORNERED RECTANGULAR  
MODIFIED BRILLIANT

Measurements

10.06 X 7.13 X 4.80 MM

GRADING RESULTS

Carat Weight

3.00 CARATS

Color Grade

D

Clarity Grade

VS 2

ADDITIONAL GRADING INFORMATION

Polish

EXCELLENT

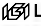
Symmetry

EXCELLENT

Fluorescence

NONE

Inscription(s)

 LG727532032

Comments: This Laboratory Grown Diamond was created by Chemical Vapor Deposition (CVD) growth process.  
Type IIa

LABORATORY GROWN DIAMOND REPORT

August 7, 2025

IGI Report No LG727532032

CUT CORNERED RECT. MODIFIED BRILLIANT

10.06 X 7.13 X 4.80 MM

Carat Weight

3.00 CARATS

Color Grade

D

Clarity Grade

VS 2

Depth

67.3%

Girdle

Slightly Thick

Culet

Pointed

Polish

EXCELLENT


Symmetry

EXCELLENT

Fluorescence

NONE

Inscription(s)

 LG727532032

Comments: The Laboratory Grown Diamond was created by Chemical Vapor Deposition (CVD) growth process.  
Type IIa

LABORATORY GROWN DIAMOND REPORT

August 7, 2025

IGI Report No LG727532032

CUT CORNERED RECT. MODIFIED BRILLIANT

10.06 X 7.13 X 4.80 MM

Carat Weight

3.00 CARATS

Color Grade

D

Clarity Grade

VS 2

Depth

67.3%

Girdle

Slightly Thick

Culet

Pointed

Polish

EXCELLENT


Symmetry

EXCELLENT

Fluorescence

NONE

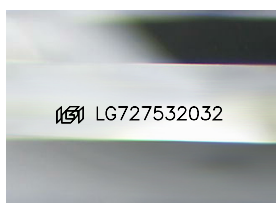
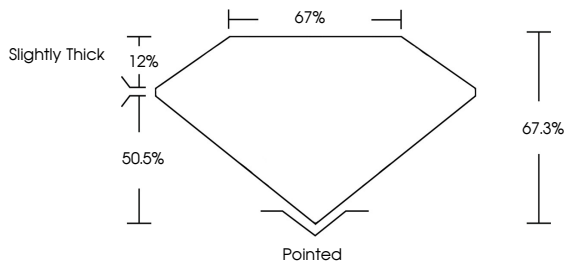
Inscription(s)

 LG727532032

Comments: The Laboratory Grown Diamond was created by Chemical Vapor Deposition (CVD) growth process.  
Type IIa

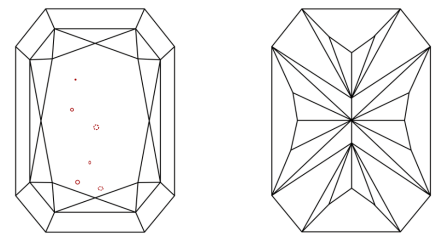
LG727532032  
Report verification at [igi.org](https://www.igi.org)

PROPORTIONS



Sample Image Used

CLARITY CHARACTERISTICS



KEY TO SYMBOLS

Red symbols indicate internal characteristics.  
Green symbols indicate external characteristics.

COLOR

D	E	F	G	H	I	J	Faint	Very Light	Light
---	---	---	---	---	---	---	-------	------------	-------

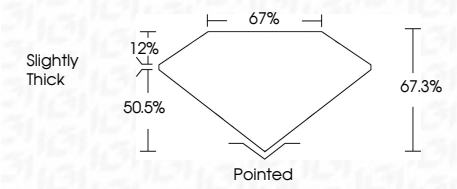
CLARITY

IF	VS <sup>1-2</sup>	VS <sup>1-2</sup>	SI <sup>1-2</sup>	I <sup>1-3</sup>
Internally Flawless	Very Very Slightly Included	Very Slightly Included	Slightly Included	Included

LABORATORY GROWN DIAMOND REPORT



August 7, 2025  
IGI Report Number LG727532032  
Description LABORATORY GROWN DIAMOND  
Shape and Cutting Style CUT CORNERED RECTANGULAR MODIFIED BRILLIANT  
Measurements 10.06 X 7.13 X 4.80 MM  
GRADING RESULTS  
Carat Weight 3.00 CARATS  
Color Grade D  
Clarity Grade VS 2



ADDITIONAL GRADING INFORMATION

Polish EXCELLENT  
Symmetry EXCELLENT  
Fluorescence NONE  
Inscription(s)  LG727532032  
Comments: This Laboratory Grown Diamond was created by Chemical Vapor Deposition (CVD) growth process.  
Type IIa



August 7, 2025

IGI Report No LG727532032

CUT CORNERED RECT. MODIFIED BRILLIANT

10.06 X 7.13 X 4.80 MM

Carat Weight

3.00 CARATS

Color Grade

D

Clarity Grade

VS 2

Depth

67.3%

Girdle

Slightly Thick

Culet

Pointed

Polish

EXCELLENT

Symmetry

EXCELLENT

Fluorescence

NONE

Inscription(s)

 LG727532032

Comments: The Laboratory Grown Diamond was created by Chemical Vapor Deposition (CVD) growth process.  
Type IIa