

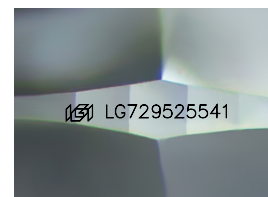
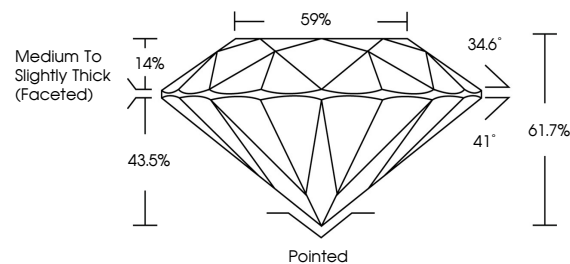


ELECTRONIC COPY

LABORATORY GROWN DIAMOND REPORT

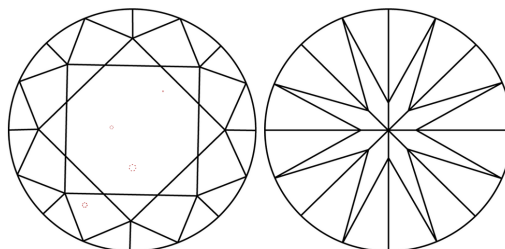
LG729525541
Report verification at igi.org

PROPORTIONS



Sample Image Used

CLARITY CHARACTERISTICS



KEY TO SYMBOLS

Red symbols indicate internal characteristics.
Green symbols indicate external characteristics.

COLOR

D E F G H I J Faint Very Light Light

CLARITY

IF WS¹⁻² VS¹⁻² SI¹⁻² |¹⁻³

Internally Flawless	Very Very Slightly Included	Very Slightly Included	Slightly Included	Included
------------------------	--------------------------------	---------------------------	----------------------	----------



August 21, 2025

IGI Report Number **LG729525541**Description **LABORATORY GROWN DIAMOND**Shape and Cutting Style **ROUND BRILLIANT**

Measurements	8.58 - 8.61 X 5.30 MM
--------------	-----------------------

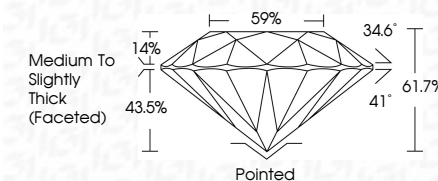
GRADING RESULTS

Carat Weight **2.45 CARATS**

Color Grade **E**

Clarity Grade VS 1

Cut Grade **IDEAL**



ADDITIONAL GRADING INFORMATION

Polish **EXCELLENT**Symmetry **EXCELLENT**Fluorescence **NONE**Inscription(s) LG729525541

Comments: This Laboratory Grown Diamond was created by Chemical Vapor Deposition (CVD) growth process.
Type IIa



© IGI 2020, International Gemological Institute

FD - 10 20



THIS DOCUMENT WAS PRODUCED WITH THE FOLLOWING SECURITY MEASURES: SPECIAL DOCUMENT PAPER, INK SCREENS, WATERMARK, BACKGROUND DESIGNS, HOLOGRAM AND OTHER SECURITY FEATURES NOT LISTED AND DO EXCEED DOCUMENT SECURITY INDUSTRY GUIDELINES

www.igi.org

August 21, 2026	Report No. LG72625541	2.45 CARATS	E	VS 1	IDEAL	61.7%	59%	Medium to Slightly Thick (Faceted)	Parted	EXCELLENT	EXCELLENT	NONE	lgf LG72625541	Comments: The Laboratory Grown Diamond was confirmed by Laser Vapor Deposition (LVD) growth process. Type IIa
ROUND BRILLIANT	Weight: 0.59 - 0.61 X 5.30 MM	Color Grade	Clarity Grade	Depth	Table	Girdle	Culet	Polish	Symmetry	Fluorescence	Inscriptions(s)			