



**ELECTRONIC COPY**

LG732519941  
Report verification at igi.org



September 10, 2025

IGI Report Number **LG732519941**

Description **LABORATORY GROWN DIAMOND**

Shape and Cutting Style **ROUND BRILLIANT**

Measurements **9.79 - 9.82 X 6.02 MM**

**GRADING RESULTS**

Carat Weight **3.56 CARATS**

Color Grade **D**

Clarity Grade **VVS 1**

Cut Grade **IDEAL**

September 10, 2025  
IGI Report Number **LG732519941**  
Description **LABORATORY GROWN DIAMOND**  
Shape and Cutting Style **ROUND BRILLIANT**  
Measurements **9.79 - 9.82 X 6.02 MM**

**GRADING RESULTS**

Carat Weight **3.56 CARATS**

Color Grade **D**

Clarity Grade **VVS 1**

Cut Grade **IDEAL**

**ADDITIONAL GRADING INFORMATION**

Polish **EXCELLENT**

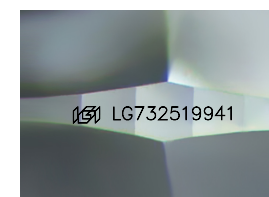
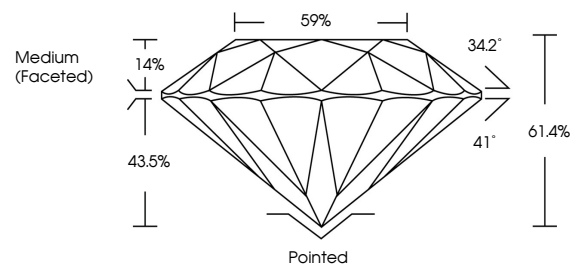
Symmetry **EXCELLENT**

Fluorescence **NONE**

Inscription(s) **IGI LG732519941**

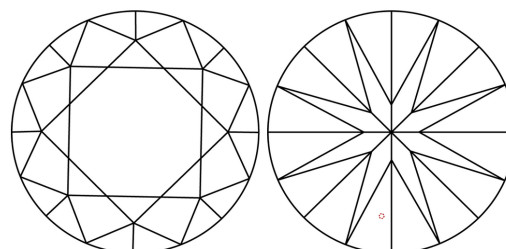
Comments: This Laboratory Grown Diamond was created by Chemical Vapor Deposition (CVD) growth process.  
Type IIa

**PROPORTIONS**



Sample Image Used

**CLARITY CHARACTERISTICS**



**KEY TO SYMBOLS**

Red symbols indicate internal characteristics.  
Green symbols indicate external characteristics.

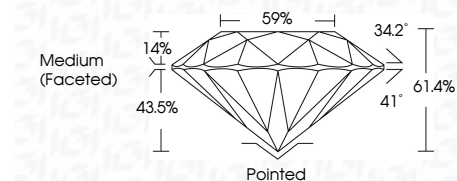
**COLOR**

D E F G H I J Faint Very Light Light

**CLARITY**

IF WS<sup>1-2</sup> VS<sup>1-2</sup> SI<sup>1-2</sup> I<sup>1-3</sup>

Internally Flawless Very Very Slightly Included Very Slightly Included Slightly Included Included



**ADDITIONAL GRADING INFORMATION**

Polish **EXCELLENT**

Symmetry **EXCELLENT**

Fluorescence **NONE**

Inscription(s) **IGI LG732519941**

Comments: This Laboratory Grown Diamond was created by Chemical Vapor Deposition (CVD) growth process.  
Type IIa



**IGI**



|  |                           |                |       |                  |           |           |      |                 |
|--|---------------------------|----------------|-------|------------------|-----------|-----------|------|-----------------|
| September 10, 2025   | IGI Report No LG732519941 | 3.56 CARATS    | D     | Pointed          | EXCELLENT | EXCELLENT | NONE | IGI LG732519941 |
| ROUND BRILLIANT  | 9.79 - 9.82 X 6.02 MM     | Color Grade    | VVS 1 | Medium (Faceted) | IDEAL     | EXCELLENT | NONE |                 |
|  |                           | Clarity Grade  | 61.4% |                  | 59%       |           |      |                 |
|  |                           | Cut Grade      |       |                  |           |           |      |                 |
|  |                           | Polish         |       |                  |           |           |      |                 |
|  |                           | Symmetry       |       |                  |           |           |      |                 |
|  |                           | Fluorescence   |       |                  |           |           |      |                 |
|  |                           | Inscription(s) |       |                  |           |           |      |                 |
| Comments: This Laboratory Grown Diamond was created by Chemical Vapor Deposition (CVD) growth process.<br>Type IIa |                           |                |       |                  |           |           |      |                 |