



**ELECTRONIC COPY**

## LABORATORY GROWN DIAMOND REPORT

|                         |                          |
|-------------------------|--------------------------|
| September 9, 2025       |                          |
| IGI Report Number       | LG732559956              |
| Description             | LABORATORY GROWN DIAMOND |
| Shape and Cutting Style | ROUND BRILLIANT          |
| Measurements            | 7.70 - 7.76 X 4.66 MM    |
| GRADING RESULTS         |                          |
| Carat Weight            | 1.70 CARAT               |
| Color Grade             | D                        |
| Clarity Grade           | VVS 2                    |
| Cut Grade               | IDEAL                    |

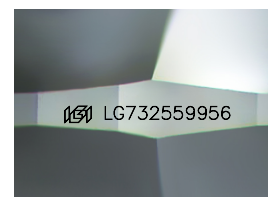
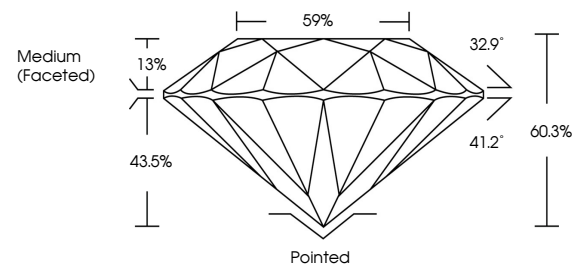
### ADDITIONAL GRADING INFORMATION

|                |             |
|----------------|-------------|
| Polish         | EXCELLENT   |
| Symmetry       | EXCELLENT   |
| Fluorescence   | NONE        |
| Inscription(s) | LG732559956 |

Comments: As Grown - No indication of post-growth treatment.  
This Laboratory Grown Diamond was created by High Pressure High Temperature (HPHT) growth process.  
Type II

LG732559956  
Report verification at [igi.org](https://igi.org)

## PROPORTIONS



Sample Image Used

## COLOR

D E F G H I J Faint Very Light Light

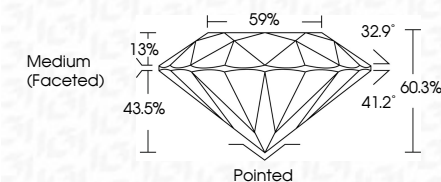
## CLARITY

| IF                  | VS <sup>1-2</sup>           | VS <sup>1-2</sup>      | SI <sup>1-2</sup> | I <sup>1-3</sup> |
|---------------------|-----------------------------|------------------------|-------------------|------------------|
| Internally Flawless | Very Very Slightly Included | Very Slightly Included | Slightly Included | Included         |

## LABORATORY GROWN DIAMOND REPORT



|                         |                          |
|-------------------------|--------------------------|
| September 9, 2025       |                          |
| IGI Report Number       | LG732559956              |
| Description             | LABORATORY GROWN DIAMOND |
| Shape and Cutting Style | ROUND BRILLIANT          |
| Measurements            | 7.70 - 7.76 X 4.66 MM    |
| GRADING RESULTS         |                          |
| Carat Weight            | 1.70 CARAT               |
| Color Grade             | D                        |
| Clarity Grade           | VVS 2                    |
| Cut Grade               | IDEAL                    |



### ADDITIONAL GRADING INFORMATION

|  |                            |
|--|----------------------------|
| Polish   | EXCELLENT                  |
| Symmetry   | EXCELLENT                  |
| Fluorescence   | NONE                       |
| Inscription(s)   | <del>(G)</del> LG732559956 |
| Comments: As Grown - No indication of post-growth treatment.                                       |                            |
| This Laboratory Grown Diamond was created by High Pressure High Temperature (HPHT) growth process. |                            |
| Type II  |                            |



© IGI 2020, International Gemological Institute

FD - 10 20



THIS DOCUMENT WAS PRODUCED WITH THE FOLLOWING SECURITY MEASURES: SPECIAL DOCUMENT PAPER, INK SCREENS, WATERMARK, BACKGROUND DESIGNS, HOLOGRAM AND OTHER SECURITY FEATURES NOT LISTED AND DO EXCEED DOCUMENT SECURITY INDUSTRY GUIDELINES

**www.igi.org**

September 9, 2025  
IGI Report No LG732559956  
ROUND BRILLIANT

7.70 - 7.76 X 4.66 MM

1.70 - 1.76 X 4.66 MM  
Carat Weight 1.70 CARAT

| Catali Weiglin | 1.70 Catal |
|----------------|------------|
| Color Grade    | D          |

|               |      |
|---------------|------|
|               | WS 2 |
| Clarity Grade |      |

| Clarity Grade | VS2 | IDEAL |
|---------------|-----|-------|
| Out Grade     |     |       |

| Depth | 60.3% |
|-------|-------|
|       |       |

|        |                  |
|--------|------------------|
| Table  | 59%              |
| Girdle | Medium (5 weeks) |

Girdle Medium (Faceted)

| Culet | Pointed |
|-------|---------|
|-------|---------|

| Culet  | Pointed   |
|--------|-----------|
| Polish | EXCELLENT |

|          |           |
|----------|-----------|
| Polish   | EXCELLENT |
| Symmetry | EXCELLENT |

|              |      |
|--------------|------|
| Fluorescence | NONE |
|--------------|------|

**Comments:** No indication of next growth.

As Grown - No Indication of post-growth treatment.

**This Laboratory Grown Diamond was created by High Pressure High**

created by High Pressure High Temperature (HPHT) growth process.