

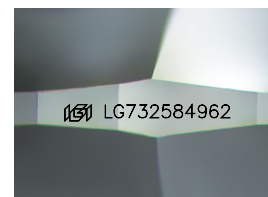
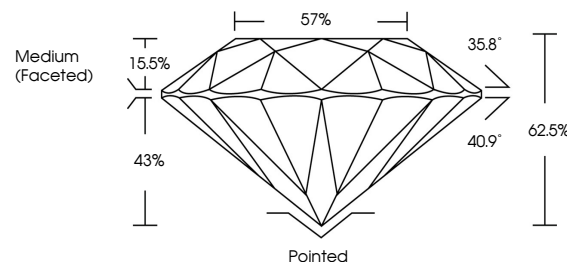


ELECTRONIC COPY

LABORATORY GROWN DIAMOND REPORT

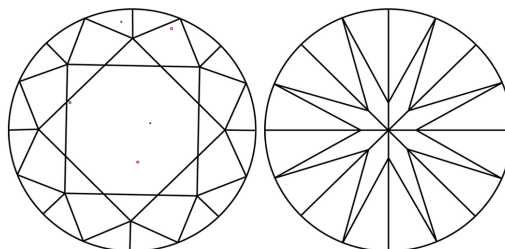
LG732584962
Report verification at lgi.org

PROPORTIONS



Sample Image Used

CLARITY CHARACTERISTICS



KEY TO SYMBOLS

Red symbols indicate internal characteristics.
Green symbols indicate external characteristics.

COLOR

D E F G H I J Faint Very Light Light

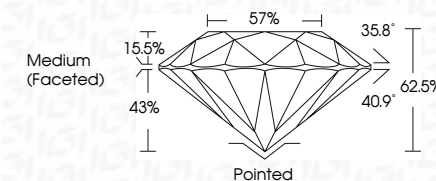
CLARITY

FL	IF	VVS ¹⁻²	VS ¹⁻²	SI ¹⁻²	I ¹⁻³
Flawless	Internally Flawless	Very Very Slightly Included	Very Slightly Included	Slightly Included	Included

LABORATORY GROWN DIAMOND REPORT



September 29, 2025	
IGI Report Number	LG732584962
Description	LABORATORY GROWN DIAMOND
Shape and Cutting Style	ROUND BRILLIANT
Measurements	8.85 - 8.89 X 5.55 MM
GRADING RESULTS	
Carat Weight	2.70 CARATS
Color Grade	F
Clarity Grade	VS 1
Cut Grade	IDEAL



ADDITIONAL GRADING INFORMATION

Polish	EXCELLENT
Symmetry	EXCELLENT
Fluorescence	NONE
Inscription(s)	 LG732584962
<p>Comments: This Laboratory Grown Diamond was created by Chemical Vapor Deposition (CVD) growth process.</p> <p>Type IIa</p>	



© IGI 2020, International Gemological Institute

FD - 10 20

www.igi.org



THIS DOCUMENT WAS PRODUCED WITH THE FOLLOWING SECURITY MEASURES: SPECIAL DOCUMENT PAPER, INK SCREENS, WATERMARK, BACKGROUND DESIGNS, HOLOGRAM AND OTHER SECURITY FEATURES NOT LISTED AND DO EXCEED DOCUMENT SECURITY INDUSTRY GUIDELINE

September 29, 2025
GI Report No LG732584962

IGI Report No LG73
 BOUND BRILLIANT

9.95 - 9.80 V 5.55 MM

Carat Weight **2.70 CARATS**

Color Grade

	Clarity Grade	Vs I
Out Grade	IDEAL	

Depth 62.5%

Table	Girdle	Medium (Encased)	5/8

	Pointed	Excellent
Culet		
Polish		

Symmetry

Fluorescence	None
Inscription(s)	1681 G732584962

This Laboratory Grown Diamond was created by Chemical Vapor Deposition

(CVD) growth process. Type IIa