

ELECTRONIC COPY

LABORATORY GROWN DIAMOND REPORT

September 9, 2025	
IGI Report Number	LG733506868
Description	LABORATORY GROWN DIAMOND
Shape and Cutting Style	ROUND BRILLIANT
Measurements	9.21 - 9.26 X 5.62 MM

GRADING RESULTS

Carat Weight	2.97 CARATS
Color Grade	D
Clarity Grade	VS 1
Cut Grade	EXCELLENT

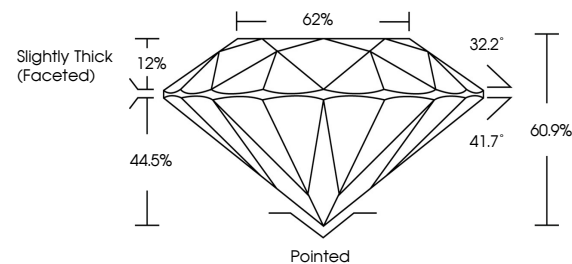
ADDITIONAL GRADING INFORMATION

Polish	EXCELLENT
Symmetry	EXCELLENT
Fluorescence	NONE
Inscription(s)	 LG733506868

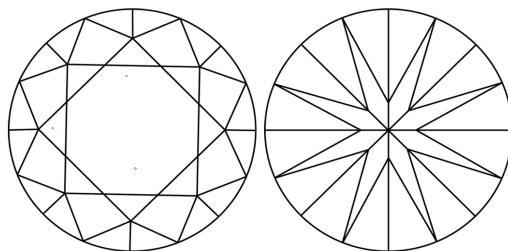
Comments: This Laboratory Grown Diamond was created by Chemical Vapor Deposition (CVD) growth process.
Type IIa

LG733506868
Report verification at igi.org

PROPORTIONS

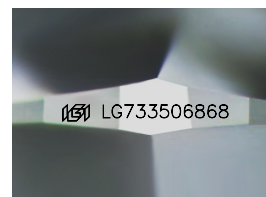


CLARITY CHARACTERISTICS



KEY TO SYMBOLS

Red symbols indicate internal characteristics.
Green symbols indicate external characteristics.



Sample Image Used

COLOR

D E F G H I J Faint Very Light Light

CLARITY

IF WS¹⁻² VS¹⁻² SI¹⁻² |¹⁻³

Internally Flawless	Very Very Slightly Included	Very Slightly Included	Slightly Included	Included
------------------------	--------------------------------	---------------------------	----------------------	----------

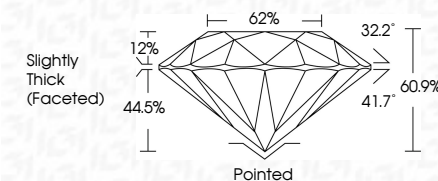
LABORATORY GROWN DIAMOND REPORT



September 9, 2025	
IGI Report Number	LG733506868
Description	LABORATORY GROWN DIAMOND
Shape and Cutting Style	ROUND BRILLIANT
Measurements	9.21 - 9.26 X 5.62 MM

GRADING RESULTS

Carat Weight	2.97 CARATS
Color Grade	D
Clarity Grade	VS 1
Cut Grade	EXCELLENT



ADDITIONAL GRADING INFORMATION

Polish	EXCELLENT
Symmetry	EXCELLENT
Fluorescence	NONE
Inscription(s)	 LG733506868
<p>Comments: This Laboratory Grown Diamond was created by Chemical Vapor Deposition (CVD) growth process.</p> <p>Type IIa</p>	



© IGI 2020, International Gemological Institute

FD - 10 20

September 9, 2025
IGI Report No LG733506868
ROUND BRILLIANT

9.21 - 9.26 X 5.02 MM		2.97 CARATS	
Carat Weight	Color Grade	D	
Clarity Grade	Cut Grade	VS 1	
Depth	Table	EXCELLENT	
Ratio	Girdle	60.9%	
		62%	
		Slightly Thick (Faceted)	
Culet	Polish	Pointed	
Symmetry	Symmetry	EXCELLENT	
Fluorescence	Fluorescence	EXCELLENT	
		NONE	

Comments:
This Laboratory Grown Diamond was created by Chemical Vapor Deposition (CVD) growth process.