

ELECTRONIC COPY

LABORATORY GROWN DIAMOND REPORT

LG733551133
Report verification at igi.org

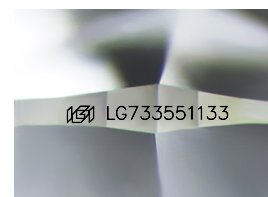
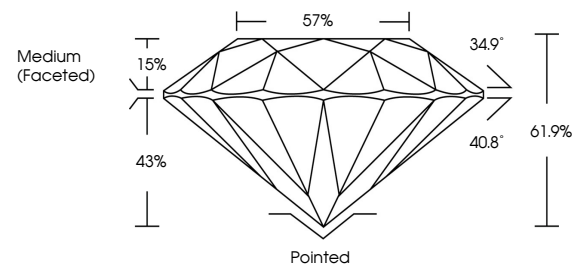
September 11, 2025	
IGI Report Number	LG733551133
Description	LABORATORY GROWN DIAMOND
Shape and Cutting Style	ROUND BRILLIANT
Measurements	7.62 - 7.69 X 4.73 MM
GRADING RESULTS	
Carat Weight	1.70 CARAT
Color Grade	D
Clarity Grade	VVS 2
Cut Grade	IDEAL

ADDITIONAL GRADING INFORMATION

Polish	EXCELLENT
Symmetry	EXCELLENT
Fluorescence	NONE
Inscription(s)	151 LG733551133

Comments: As Grown - No indication of post-growth treatment.
This Laboratory Grown Diamond was created by High Pressure High Temperature (HPHT) growth process.
Type II

PROPORTIONS



Sample Image Used

COLOR

D E F G H I J Faint Very Light Light

CLARITY

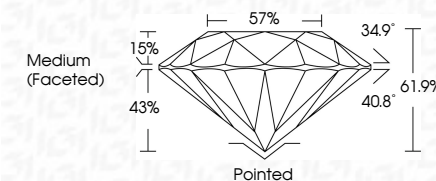
IF WS¹⁻² VS¹⁻² SI¹⁻² |¹⁻³

Internally Flawless	Very Very Slightly Included	Very Slightly Included	Slightly Included	Included
------------------------	--------------------------------	---------------------------	----------------------	----------

LABORATORY GROWN DIAMOND REPORT



September 11, 2025	
IGI Report Number	LG733551133
Description	LABORATORY GROWN DIAMOND
Shape and Cutting Style	ROUND BRILLIANT
Measurements	7.62 - 7.69 X 4.73 MM
GRADING RESULTS	
Carat Weight	1.70 CARAT
Color Grade	D
Clarity Grade	VVS 2
Cut Grade	IDEAL



ADDITIONAL GRADING INFORMATION

Polish	EXCELLENT
Symmetry	EXCELLENT
Fluorescence	NONE
Inscription(s)	(G) LG733551133
<p>Comments: As Grown - No indication of post-growth treatment.</p> <p>This Laboratory Grown Diamond was created by High Pressure High Temperature (HPHT) growth process.</p>	
Type II	



September 11, 2025
ICI Report No LG733551133
ROUND BRILLIANT

7.62 - 7.69 X 4.73 MM
1.70 CARAT

7.02 - 7.09 X 4.73 mm	1.70 CARAT	D
Carat Weight		
Color Grade		

Color Grade	D
Clarity Grade	WS 2

Clarity Grade	VS 2	IDEAL
Cut Grade		

Cut Grade	IDEAL
Depth	61.9%
Table	57%

Table	57%
Girdle	Medium (Faceted)

Girdle	Medium (Faceted)

Culet	Pointed	EXCELLENT
Polish		

Polished	EXCELLENT
Current	EXCELLENT
Polish	EXCELLENT
Symmetry	EXCELLENT

Symmetry	EXCELLENT
Fluorescence	NONE
Identification (%)	46% G793551193

Fluorescence	Inspection(s)	NONE
		1691 LG733551133

Comments:
As Grown - No indication of post-growth

Comments:
As Grown - No indication of post-growth treatment.
This Laboratory Grown Diamond was

This Laboratory Grown Diamond was created by High Pressure High Temperature (HPHT) growth process.

created by High Pressure High Temperature (HPHT) growth process.
Type II

Type II