



ELECTRONIC COPY

LABORATORY GROWN DIAMOND REPORT

October 3, 2025	
IGI Report Number	LG735512614
Description	LABORATORY GROWN DIAMOND
Shape and Cutting Style	ROUND BRILLIANT
Measurements	9.16 - 9.19 X 5.49 MM

GRADING RESULTS

Carat Weight	2.82 CARATS
Color Grade	F
Clarity Grade	VS 2
Cut Grade	IDEAL

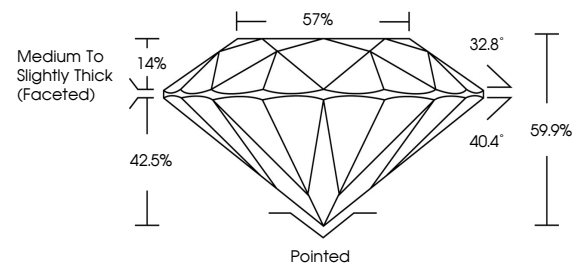
ADDITIONAL GRADING INFORMATION

Polish	EXCELLENT
Symmetry	EXCELLENT
Fluorescence	NONE
Inscription(s)	 LG735512614

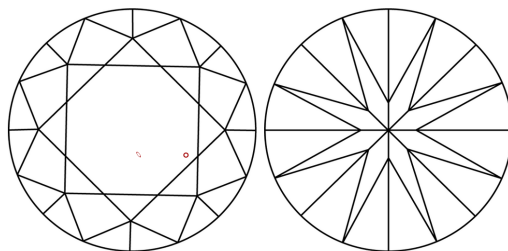
Comments: This Laboratory Grown Diamond was created by Chemical Vapor Deposition (CVD) growth process.
Type IIa

LG735512614
Report verification at igi.org

PROPORTIONS

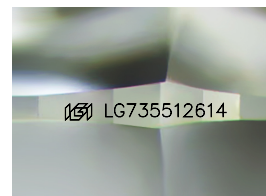


CLARITY CHARACTERISTICS



KEY TO SYMBOLS

Red symbols indicate internal characteristics.
Green symbols indicate external characteristics.



Sample Image Used

COLOR

D E F G H I J Faint Very Light Light

CLARITY

FL	IF	VVS ¹⁻²	VS ¹⁻²	SI ¹⁻²	I ¹⁻³
Flawless	Internally Flawless	Very Very Slightly Included	Very Slightly Included	Slightly Included	Included

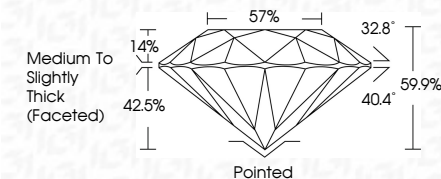
LABORATORY GROWN DIAMOND REPORT



October 3, 2025	
IGI Report Number	LG735512614
Description	LABORATORY GROWN DIAMOND
Shape and Cutting Style	ROUND BRILLIANT
Measurements	9.16 - 9.19 X 5.49 MM

GRADING RESULTS

Carat Weight	2.82 CARATS
Color Grade	F
Clarity Grade	VS 2
Cut Grade	IDEAL



ADDITIONAL GRADING INFORMATION

Polish	EXCELLENT
Symmetry	EXCELLENT
Fluorescence	NONE
Inscription(s)	 LG735512614
Comments: This Laboratory Grown Diamond was created by Chemical Vapor Deposition (CVD) growth process. Type IIa	



IG



© IGI 2020, International Gemological Institute

FD - 10 20



THIS DOCUMENT WAS PRODUCED WITH THE FOLLOWING SECURITY MEASURES: SPECIAL DOCUMENT PAPER, INK SCREENS, WATERMARK, BACKGROUND DESIGNS, HOLOGRAM AND OTHER SECURITY FEATURES NOT LISTED AND DO EXCEED DOCUMENT SECURITY INDUSTRY GUIDELINES

www.igi.org

Date:	October 3, 2025
Report No.:	L6785512614
Color Grade:	GROWN BRILLIANT
Weight:	0.12 - 0.15 X 5.49 MM
Cut:	Color Grade
Clarity:	VS 2
Depth:	IDEAL
Table:	65/9%
Girdle:	57%
Fluorescence:	Medium to Slightly Thick (Feared)
Comments:	Polished Excellent Excellent Symmetry Surface Inscriptions(s) None L6785512614
Notes:	Comments: Created by Crown Diamond was treated by Chemical Vapor Deposition (CVD) growth process. Type IIa